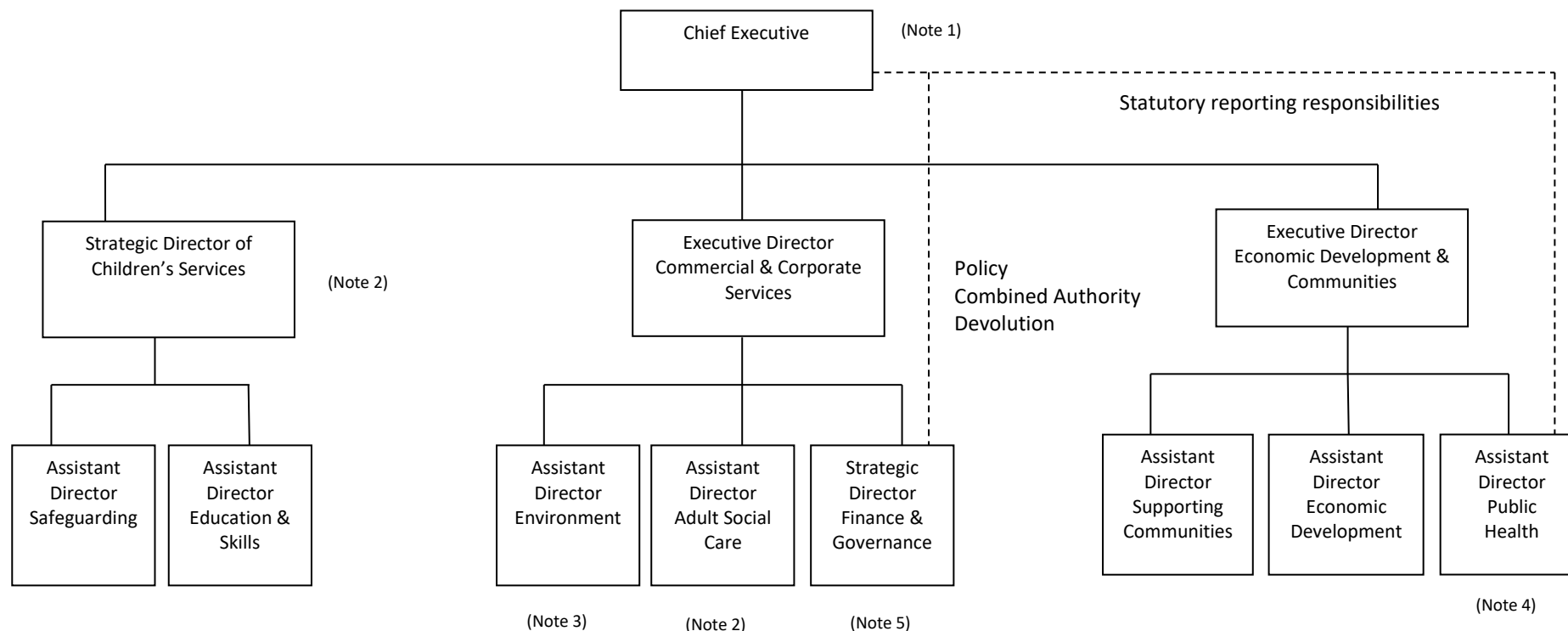


LEADERSHIP TEAM REVISED STRUCTURE

**12 FTE – Costs £1.41m including overheads - £116k/year reduction on existing
Existing 13 FTE – Cost £1.53m including overheads**



NOTES

- (1) Chief Executive responsibilities and grade to be re-evaluated following Devolution and Combined Authority.
- (2) Existing Executive Director, Wellbeing, care and Learning post to be deleted and Strategic Director of Children’s Services created. Adult Social Care to report through the Executive Director, Corporate and Commercial Services.
- (3) Assistant Director, Environment post to be job evaluated upon implementation of Leisure Trust.
- (4) Assistant Director, Public Health (DPH) will take responsibility for Registrar and Coroner Service.
- (5) Assistant Director, Finance and Investment post combined with Assistant Director, Organisation and Governance to create Strategic Director, Finance and Governance.