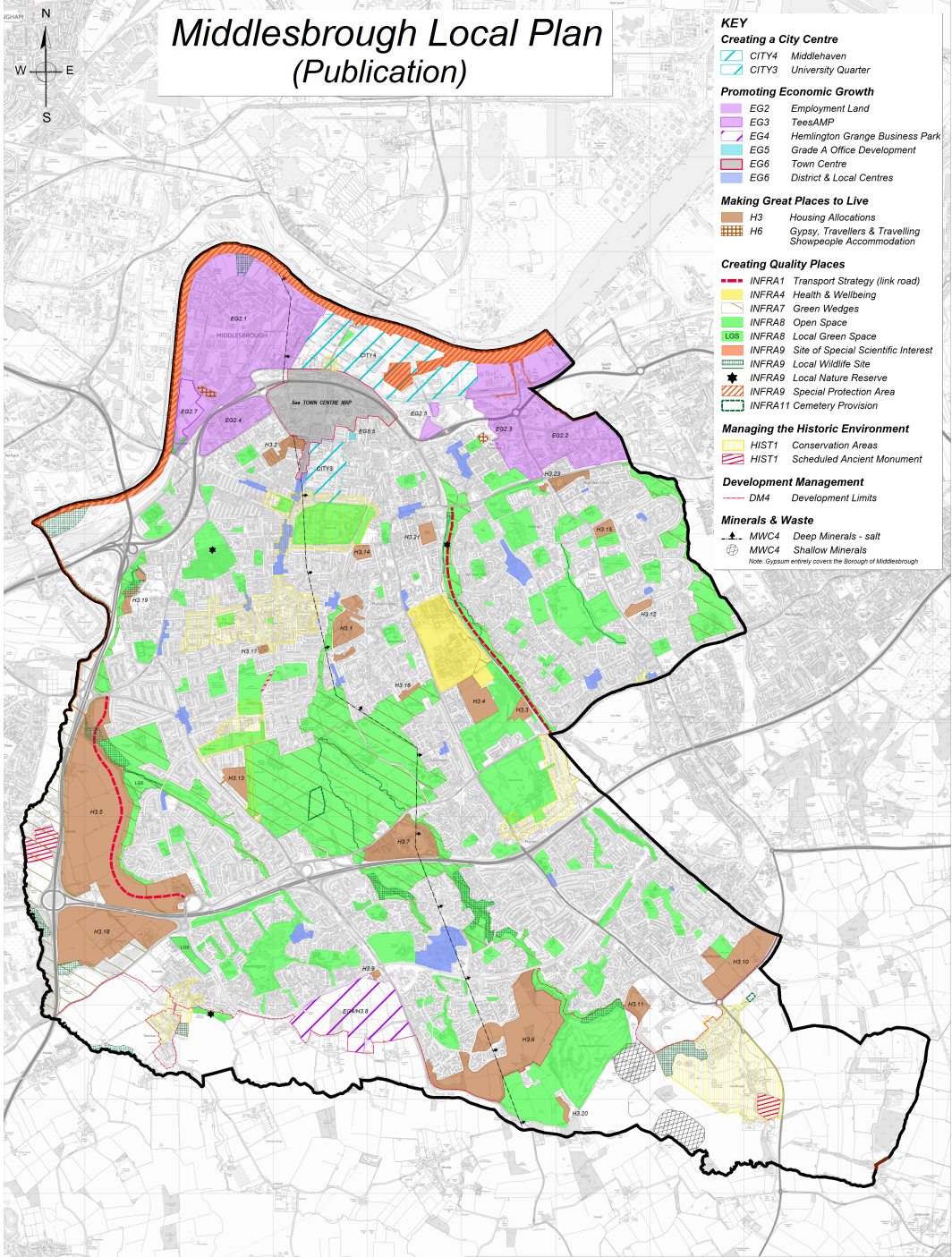


Middlesbrough Local Plan (Publication)



- KEY**
- Creating a City Centre**
- CITY4 Middlehaven
 - CITY3 University Quarter
- Promoting Economic Growth**
- EG2 Employment Land
 - EG3 TeesAMP
 - EG4 Hemlington Grange Business Park
 - EG5 Grade A Office Development
 - EG6 Town Centre
 - EG6 District & Local Centres
- Making Great Places to Live**
- H3 Housing Allocations
 - H6 Gypsy, Travellers & Travelling Showpeople Accommodation
- Creating Quality Places**
- INFRA1 Transport Strategy (link road)
 - INFRA4 Health & Wellbeing
 - INFRA7 Green Wedges
 - INFRA8 Open Space
 - LGS INFRA8 Local Green Space
 - INFRA9 Site of Special Scientific Interest
 - INFRA9 Local Wildlife Site
 - INFRA9 Local Nature Reserve
 - INFRA9 Special Protection Area
 - INFRA11 Cemetery Provision
- Managing the Historic Environment**
- HIST1 Conservation Areas
 - HIST1 Scheduled Ancient Monument
- Development Management**
- DM4 Development Limits
- Minerals & Waste**
- MWC4 Deep Minerals - salt
 - MWC4 Shallow Minerals
- Note: Gypsum entirely covers the Borough of Middlesbrough



| | |
|--------------------------|---------------------------|
| Head of Service: | Ref: GIS1.PR.AO1 |
| Service Area: Planning | Scale: 1:12,500 @ A0 |
| Created by: John Manders | Date: 25th September 2018 |