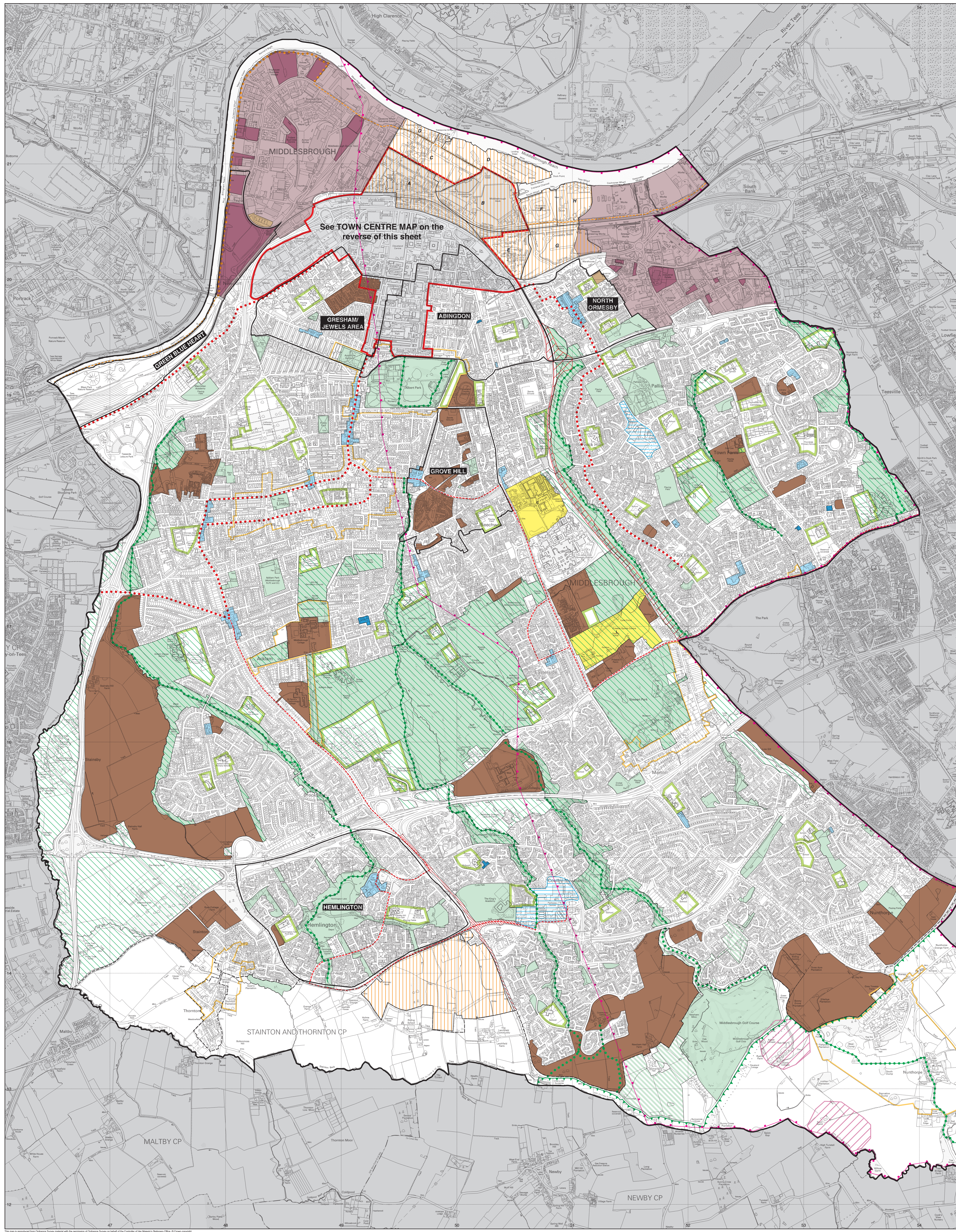


MIDDLESBROUGH HOUSING LOCAL PLAN

PROPOSALS MAP
ADOPTED NOVEMBER 2014



See TOWN CENTRE MAP on the reverse of this sheet

Legend

- REGENERATION AREAS**
- REG 7 Hemlington
 - H3, H17 Gresham/Jewels Area
 - REG 9 Abingdon
 - REG 10 North Ormesby
 - H3, H19 Grove Hill
 - H1, CS21, REG 17 Green Blue Heart
- MIXED USE SITES**
- H7, H23-24 Hemlington Grange
 - H1, H2, H14-16 Middlehaven
 - A - B&B
 - B - Middlebrough Dock
 - C - Tees Neighbourhood
 - D - Tees River Front
 - E - Hallerman Chemicals
 - F - Riverside Stadium
 - G - Cargo Fleet
 - H - South Tees Industrial Zone
- HOUSING**
- H31, H17-22, H26-30, H32-36 Proposed housing site
 - H13, H37 Gypsy and travelling show people sites
- EMPLOYMENT**
- REG 13, REG 16 Riverside Park and EMB&Z employment areas
 - REG 12, REG 14, REG 15 B1, B2 and B8 uses - proposed
- TOWN CENTRE AND RETAILING**
- H1, CS13, CS14, CS20 Town Centre boundary
 - CS13, REG 28 District centres
 - CS13, REG 29 Local centres
 - CS13, REG 30 Neighbourhood centres
- LEISURE**
- H4, CS14, REG 31 Prissick Base
- COMMUNITY USES**
- REG 32 St. Luke's Hospital
- TRANSPORTATION**
- CS17, REG 34 East Middlesbrough transport corridor
 - H25 Road proposals/improvements
 - REG 37 Bus network "Super Core" routes
 - REG 37 Bus network core routes
 - E5 Teesdale Way - existing
 - E5 Teesdale Way - proposed
- ENVIRONMENT**
- CS20, E2 Green wedge (public and private access open space)
 - E4 Greenlinks - existing
 - E4 Greenlinks - proposed
 - E7 Primary open space
 - E8 Primary open space - proposed
 - E10 Secondary open space
 - E20 Limit to development
 - E21 Special landscape area boundary
 - CS4, CS5, E44 Conservation area boundary
- MINERALS**
- MWC4 Deep Minerals - salt
 - MWC4 Shallow Minerals
- Note: Gypsum entirely covers the Borough of Middlesbrough

