



**MIDDLESBROUGH SAFEGUARDING CHILDREN BOARD**

# **ANNUAL REPORT 2017 / 2018**



**THE VOICE OF THE CHILD**



[middlesbrough.gov.uk](http://middlesbrough.gov.uk)

Middlesbrough  
moving forward

## Essential Information

**Author: Gary Watson MSCB Business Manager**

Date of Publication: December 2018

Approval Process:

Date:	10.09.2018	MSCB Business Manager/MSCB Chair
Date:	26.09.2018	Performance & Quality Assurance Group
Date:	19.09.2018	MSCB - draft
Date:	21.11.2018	MSCB - approval

Availability and accessibility

This document is freely available from the MSCB website -  
[www.middlesbrough.gov.uk/MSCB/safeguarding](http://www.middlesbrough.gov.uk/MSCB/safeguarding)

Contact Details:

**Mark Braithwaite**  
MSCB Independent Chair

**Gary Watson**  
MSCB Business Manager

### Report Writing

Gary Watson – MSCB Business Manager



<b>CHAPTER</b>		<b>PAGE</b>
	<b>FOREWORD</b>	<b>4</b>
<b>1</b>	<b>MSCB PRIORITIES PROGRESS AND IMPACT</b>	<b>5</b>
<b>2</b>	<b>LISTEN TO THE VOICE OF THE CHILD</b>	<b>8</b>
<b>3</b>	<b>THIS ANNUAL REPORT</b>	<b>9</b>
<b>4</b>	<b>ROLE OF THE MSCB</b>	<b>11</b>
<b>5</b>	<b>LOCAL BACKGROUND &amp; CONTEXT</b>	<b>13</b>
<b>6</b>	<b>GOVERNANCE &amp; ACCOUNTABILITY</b>	<b>19</b>
<b>7</b>	<b>WORKFORCE TRAINING &amp; DEVELOPMENT</b>	<b>37</b>
<b>8</b>	<b>WHAT HAPPENS WHEN A CHILD DIES</b>	<b>42</b>
<b>9</b>	<b>ISSUES &amp; CHALLENGES</b>	<b>45</b>
	<b>APPENDIX 1 : ELECTORAL WARDS OF MIDDLESBROUGH</b>	<b>51</b>

## FOREWORD



Accountable to the Chief Executive here in Middlesbrough, my role as Independent Chair to the MSCB is to lead the Board and ensure that it fulfils its statutory obligations. Key to achieving this is work through the Board's subgroup structure that is designed to support and challenge agencies to optimise their safeguarding arrangements in a continually evolving partnership landscape.

The Children and Social Work Act, enabled in April this year, anticipates significant change in safeguarding structures/responsibilities and brings the potential for transitional instability. In offering a cautious welcome to opportunities that might present, much remains to be done if future arrangements (whatever they look like) are to strengthen and improve on what is in place currently. My challenge to local agencies is to maintain business as usual until clear and proven alternative arrangements have been identified and put into operation.

I have said many times and in a variety of forums that the front line is where it all comes together and I want to make clear that progress our partnerships have made during this last year has been very much delivered by the efforts of frontline staff. It is the Health Visitors; Social Workers; Teachers; Police Officers; Nurses, Care workers and countless others (both professional and volunteer) who are in direct and daily contact with children and young people within our communities. These are the people in whom the board seeks to invest, whose decisions make a difference to families lives and in presenting this annual report I want to applaud their continued hard work and dedication.

Mark R. Braithwaite

A handwritten signature in black ink, appearing to read 'Mark R. Braithwaite', with a long horizontal line underneath.

Independent Chair MSCB

## OUR VISION

*"To Work Together as an Interagency Partnership Throughout Middlesbrough to Safeguard and Promote the Welfare of Children"*

## CHAPTER 1

### MSCB STRATEGIC PRIORITIES

#### PRIORITY 1

**The MSCB will promote the safety and wellbeing of children and young people with a particular focus on those suspected of being at risk.**

What has been done:

- The Board is effectively represented on key partnerships, and has triggered the development of the Children's Safeguarding Arrangements Strategic Group chaired by the Chief Executive.
- The Independent Chair sits on the Children's Trust board and local Health and Wellbeing Board (HWB). There is an agreed reporting cycle between these groups.
- The MSCB has improved communication with the general public regarding key aspects of the work of the Board through the revised MSCB website which was reviewed and updated in this year.
- The MSCB has been successful in more positive engagement with the local faith and community groups. This includes the safeguarding awareness raising with the local Mosques and Churches and other faith groups via the Interfaith Network. Safeguarding briefing sessions are being scheduled for the faith groups.
- The MSCB has engaged effectively with the local business community through the awareness raising sessions around child sexual exploitation and vulnerable young people for the night time trade and the eLearning for the Taxi trade.

#### Impact

From one of the MSCB'S recently published serious case reviews it was identified that "Middlesbrough Safeguarding Children Board (MSCB) should include "the risk of drug using parents actively giving drugs to their children" be covered in all relevant MSCB training. Consideration should be given to including the request that relevant staff routinely ask parents who misuse substances if they have ever given their children illicit substances. As a result Public Health with the MSCB commissioned training workshops from the national organisation ADFAM and the MSCB multi-agency training now includes the signs and symptoms in children of drug ingestion, and clarity about what professionals should do if they suspect this is happening.

## PRIORITY 2

### **The MSCB will work with partner agencies to promote early help and recognise and respond to the neglect of children and young people.**

What has been done?

- A number of multi-agency discussions have taken place around the Threshold Guidance and the Early Help process. This has resulted in a planned revision of the Threshold document in response to the latest front door Ofsted inspection. A re-launch of the Threshold Guidance and the Early Help Strategy will be undertaken in 2018/19 supported by additional multi-agency training on these two areas.
- The Neglect Strategy has been reviewed and updated for 2018-2020 with the Signs of Safety approach being rolled out across service areas. The plan is to have a launch event for the Neglect Strategy across Middlesbrough involving partners with a section of the Love Middlesbrough magazine dedicated to Neglect and the local strategy.
- My Family Plan (Early Help Assessment) launched and rolled out across Middlesbrough.
- Multi – Agency Audit on Neglect carried out and findings submitted to partners via the MSCB.
- Continuing in partnership with Hartlepool, Stockton and Redcar & Cleveland we have in place a sub-regional safeguarding policies and procedures website which is up to date and being well used.
- The Tees VEMT (Vulnerable, Exploited, Missing, Trafficked) Strategic Group have developed a strategy and action plan. These are very much 'live' documents and are being updated with local and national findings.

### **Impact**

The profile of Neglect and Early Help has been increased with training available to professionals and staff working in Middlesbrough. The Tees safeguarding procedures website is recognised by inspectorate as a good source of information and is well accessed from a wide variety of people.

The VEMT structure across Tees is also recognised by all inspectorates as a highly developed process and major steps have been made to consolidate process and procedure across the Tees Valley. The significant improvement in data collection via the Tees Performance Management Framework data set is to be noted.



## PRIORITY 3

**The MSCB will develop and implement effective communication strategies with a focus on the participation of children and young people.**

What has been done:

- Development with Middlesbrough College of a local CSE drama production based on the local CSE profile, regional and national information was rolled out to some secondary schools with more planned for 2018/19 pending Middlesbrough College student capacity.
- Return home interviews all collect and collate the views of the child/young person which is fed back via the quarterly reports to managers and professionals.
- The VEMT referral forms now all collect the views of the child.

### Impact

As a result of the multi-agency VEMT audit the voice of the child/young person is collected via the VPG referral process. The Voice of the child is now part of all MSCB multi-agency audits and is reported back to partner agencies via the board.

## PRIORITY 4

The MSCB will work with partner agencies to improve the link with adult services in particular those services working with domestic abuse, parental mental health and substance misuse.

What has been done:

- Multi-agency task and finish groups are making good progress around Domestic Abuse and Neglect
- Multi –Agency Audit on Domestic Abuse
- Multi- Agency Audit on impact of Parental Substance Misuse on children.
- The elearning training program has been linked with adults safeguarding packages via the virtual college

### Impact

The MSCB training programme reflects bespoke safeguarding issues. This includes training around child sexual abuse, disguised compliance and challenging families, domestic abuse, neglect including adolescent neglect. E-learning via the virtual college is now accessible to professionals working in both adults and children services as well as the voluntary and community sector.



## CHAPTER 2

### LISTEN TO THE VOICE OF THE CHILD

Children and young people "have a voice and should be listened to". Research has shown that having your voice heard is one of the aspects of a child's life most linked to their overall wellbeing.

Although many professionals working in children's services are "naturals" at communicating with children and young people, this is not a universal skill. To give genuine attention to the voice of the child, we need to ensure that staff training and development across our partner organisations are timely and relevant. This is particularly true for professionals working with older children who often assume that such children are more resilient than they are so consequently may not provide the support required.

Technology, particularly internet chat rooms and social media, are a constant for many children and young people. Their ability to use these resources leaves a majority of adults floundering. The best way to protect children, many of whom are unaware or careless of the risks, may be to recruit appropriate youngsters to help us to help them. We have a small group exploring this possibility.

#### Children/Young People said:

*"feeling listened to and understanding what was happening".*

*"Young people reported that their learning needs are often not met in school and that this has a major impact on their lives"*

*Taken from Barnardos consultation with Young People*





## CHAPTER 3

### MSCB ANNUAL REPORT

This is the sixth published Annual Report of the Middlesbrough Safeguarding Children Board (MSCB).

The report aims to provide the user with a single document containing all the related activity of the Board for the period April 2017 to March 2018. It describes all the responsibilities of the Board as well as those measurable objectives against which its effectiveness can be judged.

The Report can be found on the MSCB website:

[www.middlesbrough.gov.uk/MSCB/safeguarding](http://www.middlesbrough.gov.uk/MSCB/safeguarding)

This year the report has been radically revised in an attempt to enhance its readability and usefulness.

#### **HM Government Guidance: Working Together To Safeguard Children: States**

The Chair must publish an Annual Report on the effectiveness of safeguarding and welfare provision for children in Middlesbrough.

The report should provide a rigorous and transparent assessment of the performance and effectiveness of local services. It should also identify:

1. any services that need improvement;
2. the underlying reasons for required improvement;
3. and actions being taken

The report should also include lessons learnt from any reviews undertaken within the reporting period.

LSCBs should conduct assessments on the effectiveness of Board partners' responses to child sexual exploitation and include:

1. information on the outcome of assessments;

2. how partners have used their data to promote service improvement for vulnerable children and families, including in cases of sexual abuse;
3. appropriate data on children missing from care;
4. how the LSCB is addressing this issue.

The report should also provide information on:

1. contributions made to the LSCB by partner agencies
2. details of LSCB spending, including that on Child Death Reviews and Serious Case Reviews
3. other specific expenditure such as learning events and training.

All LSCB member organisations have an obligation to provide LSCBs with reliable resources (including finance) to enable them to be strong and effective. Partner agencies should share the financial responsibility for the LSCB in such a way that a disproportionate burden does not fall on a small number of partner agencies.

*Digital safeguarding a quote from Dr T Byron, Safer Children in a Digital World Report:*

*'Children and young people need to be empowered to keep themselves safe – this isn't just about a top down approach. Children will be children – pushing boundaries and taking risks. At a public swimming pool we have gates, put up signs, have life guards and shallow ends, but we also teach children to swim'.*

## CHAPTER 4

### THE ROLE OF THE MSCB, WHO ARE THE MEMBERS OF THE BOARD AND WHAT DOES IT DO?



#### AGENCY REPRESENTATION & MANAGEMENT ARRANGEMENTS

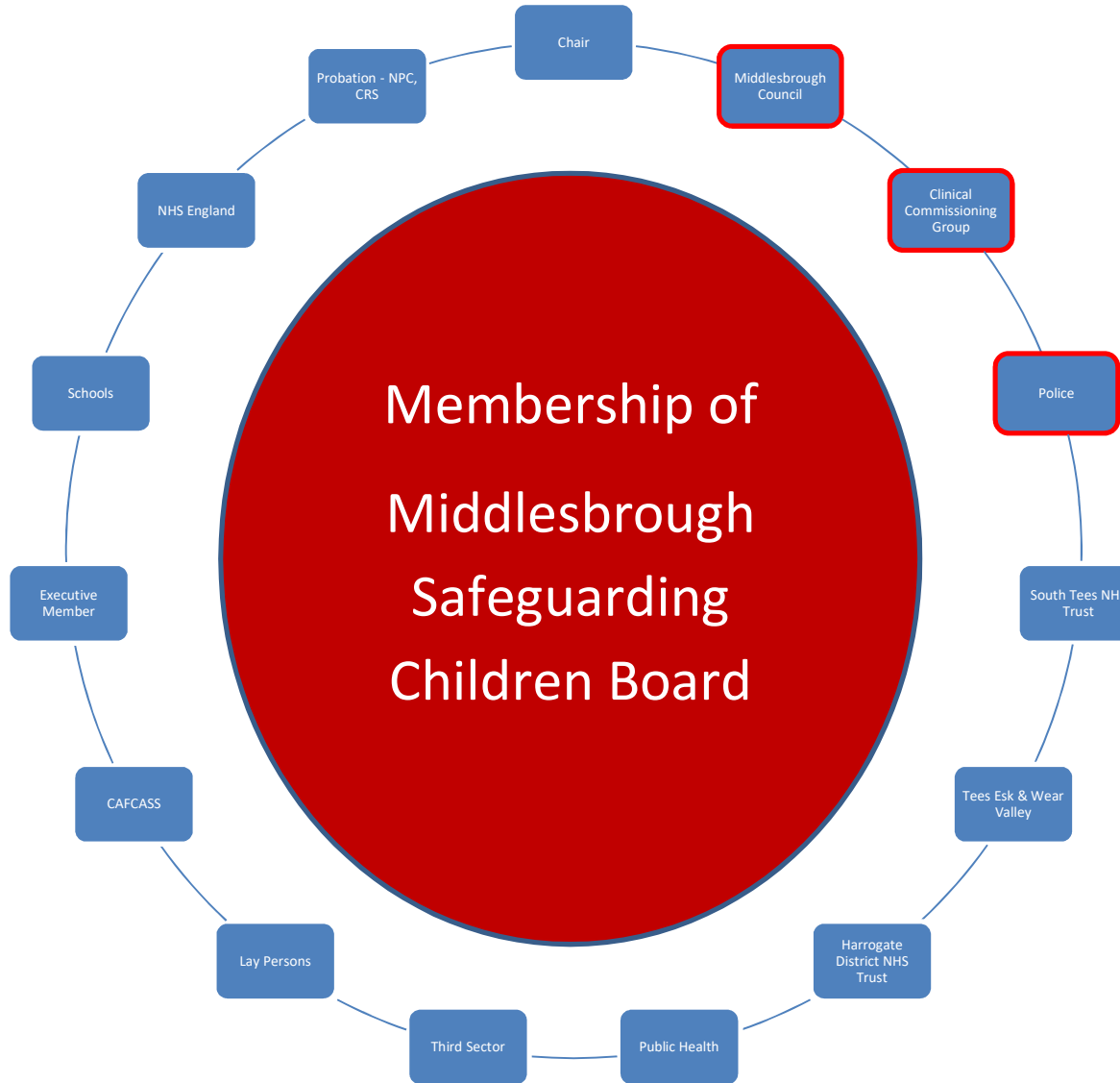
Agency representation on the MSCB is of the utmost importance. Board members are required to have a strategic professional role within their organisation and be of sufficient seniority to enable them to:

- speak for their organisation with authority;
- commit their organisation on policy and practice matters;
- hold their organisation to account;
- influence the development of their particular agency's working practices;
- ensure that child protection and safeguarding services within their agencies are adequately resourced; and
- contribute to the development of robust and effective performance management arrangements.

#### Chairing arrangements:

**Chair:** Mark Braithwaite was appointed as Independent Chair to the MSCB in October 2010. He provides support in both the public and professional arenas. His commitment to the role and to the welfare and safeguarding of children and young people in Middlesbrough continues to be exemplary.

**Vice-Chair:** The Vice Chair deputises for the Chair when the latter is unavailable. We are actively seeking a replacement for this role following the recent retirement of the Deputy Director of Nursing to take up a new post.



The Red outline indicates Safeguarding Lead Agencies under the legislation enabled in 2018 of the revised governance structures due to be implemented in 2019

## CHAPTER 5

### LOCAL BACKGROUND & CONTEXT

Middlesbrough has high aspirations for its children and young people.

It is an acknowledged fact that those affected by domestic abuse, poverty, neglect, substance misuse and/or poor parental mental health are much less likely to arrive at school ready to learn. Middlesbrough has significant challenge in all these category areas.

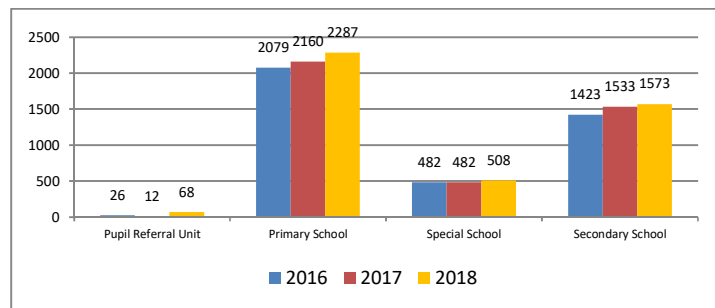
Middlesbrough ward boundaries, *See Appendix 1*

Middlesbrough is served by a range of partner agencies that include:

- Clinical Commissioning Group – South Tees
- 42 Primary Schools
- 11 Secondary Schools
- 2 Pupil Referral Units
- 4 Special Schools
- Cleveland Unit
- Youth Offending Service - South Tees
- Cleveland Police
- Cleveland Fire Service
- 2 Colleges
- 1 University – Teesside
- James Cook University Hospital
- Tees Esk & Wear Valley NHS Trust – CAMHS/LD
- Harrogate & District NHS Trust – Health Visiting and School Nursing

#### Children of Middlesbrough

In Middlesbrough there are **36,093** children and young people in the borough of whom **24,663** are in education (including school nursery provision- School Census 2018). The census identified that the number of children with special educational needs (SEN) had increased to **4,436** in 2018 a **6%** increase.

**CHART 1: SPECIAL EDUCATIONAL NEEDS**

In primary schools 26% of children are from BME groups compared with 12% in the local population as a whole, with approximately half of these pupils having their ethnic heritage identified as Pakistani. The BME population amongst school-age children is growing by about 1% per year.

There are increasing numbers of children in local schools for whom English is not their first language and with significant numbers of refugees, asylum seekers and economic migrants. Some primary schools evidence more than 20 languages across the student population.

The proportion of children with identified SEN increases significantly in the most deprived parts of the borough.

The Child Poverty Map of the UK 2013 identified that 37% of children in Middlesbrough live in poverty compared with 20% nationally. This is reflected in the fact that 36% of statutory school age children are eligible for free school meals, (this is twice the national average).

### Children Social Care

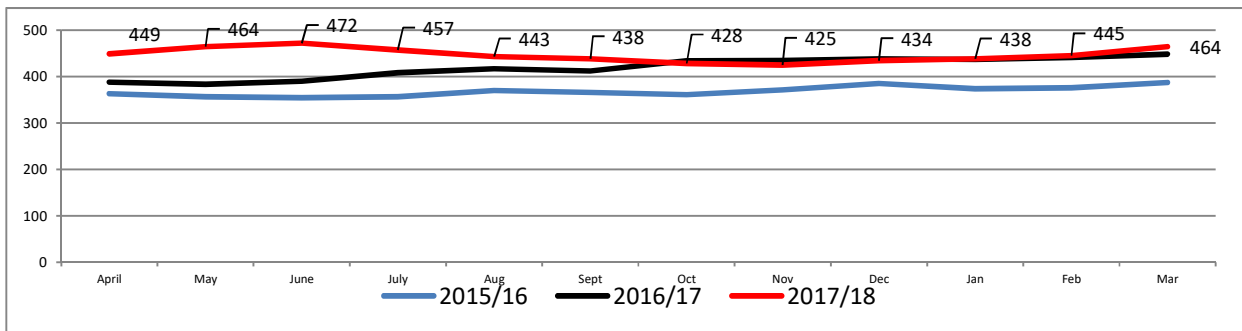
National indicators are used to monitor the performance of Children's Social Care. This information is presented to the MSCB as part of Tees Performance Management Framework.

### Looked After Children

Middlesbrough has a significantly higher rate of Looked After Children than its regional, - national and statistical neighbours, placing it in the top 10 local authorities in England for the rate of Looked After Children per 10,000 under 18 population.

The number of Looked After Children in Middlesbrough at the end of March 2017 was 448 or 140 per 10,000 rising to 464 or 145 per 10,000 at the end of March 2018. At the end of March 2018 the number of looked after children from other Local Authorities living in Middlesbrough was **124** children/young people, an increase from **86** in the previous period.

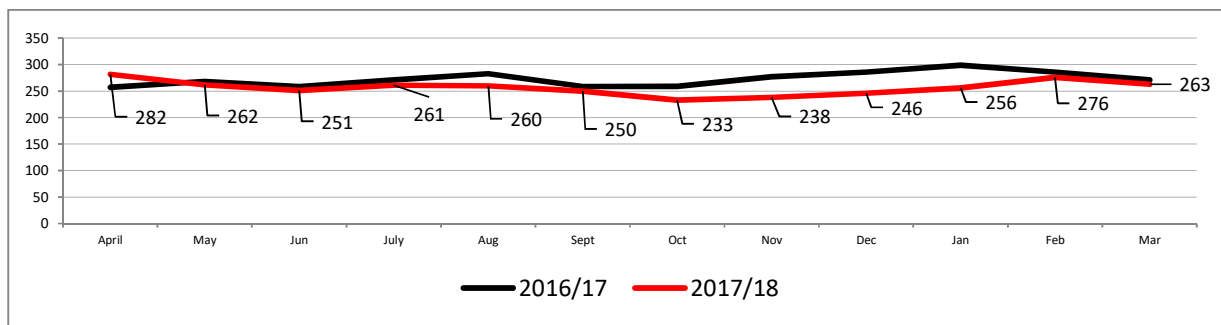
**CHART 2: MONTHLY LAC FIGURES 2015/16, 2016/17, 2017/18**



**Child Protection**

The number of children and young people subject to a child protection plan at the end of March 2018 was 263 (73/10,000) compared to March 2017 which was 271 (75/10 000) a decrease of nearly 3%. A majority had a child protection plan under the category of neglect.

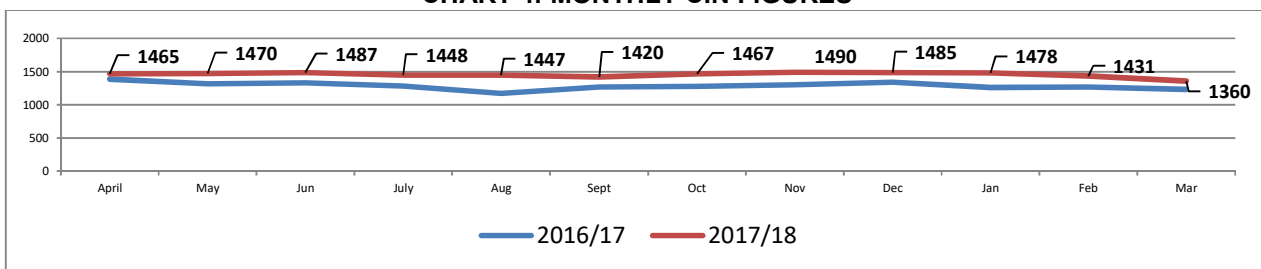
**CHART 3: MONTHLY CP FIGURES 2016/17 and 2017/18**



**Children in Need**

Middlesbrough identified 1229 children and young people as Children in Need at the end of March 2017, this number increased to **1360** by March 2018 an increase of **10.7%**.

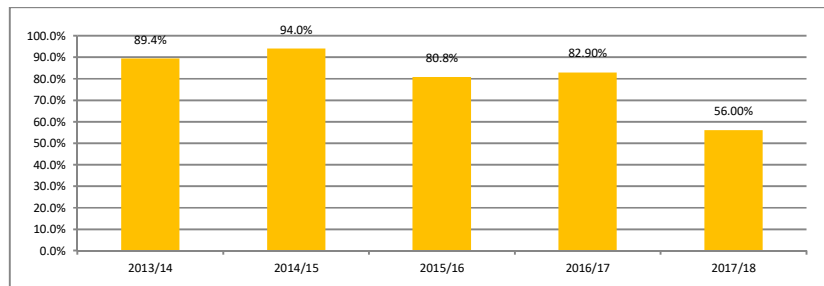
**CHART 4: MONTHLY CIN FIGURES**



## Single Assessments

Between April 2016 and March 2017 Children Social Care carried out **2,750** single assessments, **2,281** within timescale, however the figures for the period April 2017 to March 2018 3,626 single assessments were completed with only 2,016 (56%) within timescale a significant decrease compared to the last reporting period.. The table below shows a comparison across the last five years.

**Chart 5: SINGLE ASSESSMENTS COMPLETED WITHIN TIMESCALE**



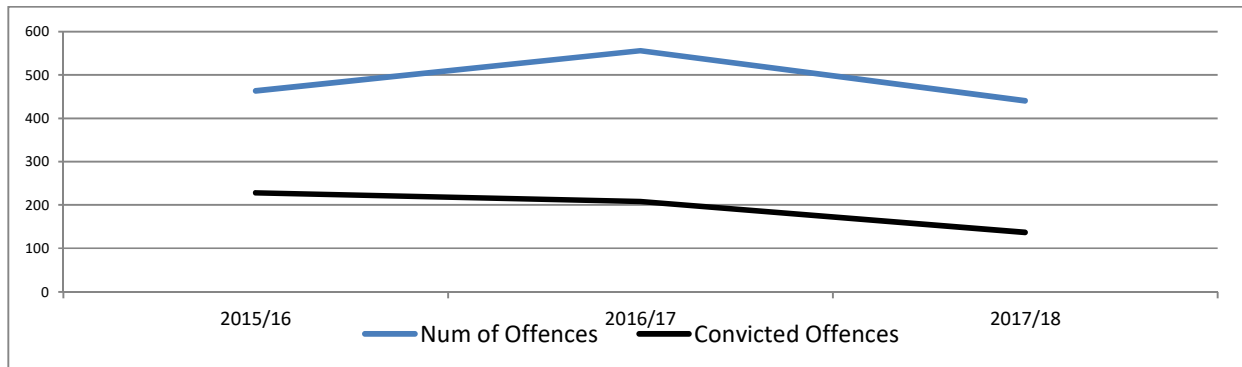
## Youth Offending Service (YOS).

Youth Offending Service support is delivered on a South Tees basis across the Middlesbrough and Redcar & Cleveland areas. and is represented on the MSCB through the Assistant Director of Prevention and Partnership and the South Tees Youth Offending Service Manager (Head of Partnerships). It reports to the Learning & Improving Practice Sub Group on individual cases classed as 'Serious Incidents' and also has representation on the MSCB sub groups.

In 2016/17, the YOS dealt with 208 offenders who were convicted of 556 offences. This number decreased to **137** offenders convicted of **440** offences in 2017/18; a **34.1%** reduction in young offenders and a fall of **20.9%** in offences. Of these **93.4%** of offenders were male with **87.0%** being of white origin.

At the end of March 2017, four young people were serving custodial sentences in Wetherby Young Offenders Institution. As at 31<sup>st</sup> March 2018 this number remained at 4, 3 of whom were detained in Wetherby and 1 at Aycliffe Secure Centre.



**CHART 6: Number Recorded Offences 2015/16, 2016/17, 2017/18**

### Links to Adult Services/Mental Health/Drugs & Alcohol.

The vulnerability of adults is regularly identified as a key factor in serious case reviews both locally and nationally. In Middlesbrough particular focus has been placed on domestic abuse in an effort to ensure that children are safeguarded and that there is appropriate service development across all partner agencies.

#### Adult Safeguarding.

The MSCB has representation from Adult Services by the strategic lead for Safeguarding Adults, with representation by the Well-being Care & Learning board member on the Tees-wide Adult Safeguarding Board. The MSCB receives the Teeswide Safeguarding Adults Annual Report.

#### Mental Health.

The MSCB has representation from Mental Health Services, with the Named Doctor, Tees Esk & Wear Valley NHS Foundation Trust, which covers adult mental health, CAMHS (Children and Adolescent Mental Health Services) and Learning Disability.

In the period April 2017 to March 2018 there were 1865 referrals. 989 of these received a service from CAMHS. The rest were either signposted, declined a service, or did not respond to requests of contact before making an appointment.

#### Police

Cleveland Police covers the Middlesbrough as well as the other Tees area's and deploys to calls for service. The force provides for the investigation of offences and specialist services to ensure appropriate safeguarding of vulnerable people and children. The force has a

dedicated 'Protecting Vulnerable People' (PVP) unit comprising of specialist trained officers that include:

- Child Abuse Investigation Unit;
- Vulnerable Adults Units;
- Vulnerable through Exploitation, Missing or Trafficking (VEMT) Unit;
- Domestic Abuse Unit;
- Sex Offender Management Unit (SOMU)
- Cyber Crime Unit

Analysis by Cleveland Police highlights sexual offences, modern slavery and human trafficking, domestic abuse, vulnerable adult abuse and child abuse as the areas presenting highest risk. In recent years the force has invested heavily into safeguarding and continues to work closely with partners in response to these highlighted risk areas.



## CHAPTER 6

### GOVERNANCE ARRANGEMENTS

#### MAKING SURE THAT ALL OUR DEALINGS ARE TRANSPARENT

This Report fulfils the statutory requirement contained within Working Together to Safeguard Children to produce an annual report that:

1. collates relevant management information on safeguarding and child protection activity
2. reports on progress in the previous year
3. outlines priorities for the forthcoming year.

The MSCB has a three year business plan and this report will also address the progress of work under that plan to update and change any priorities based on current and/or predicted information.

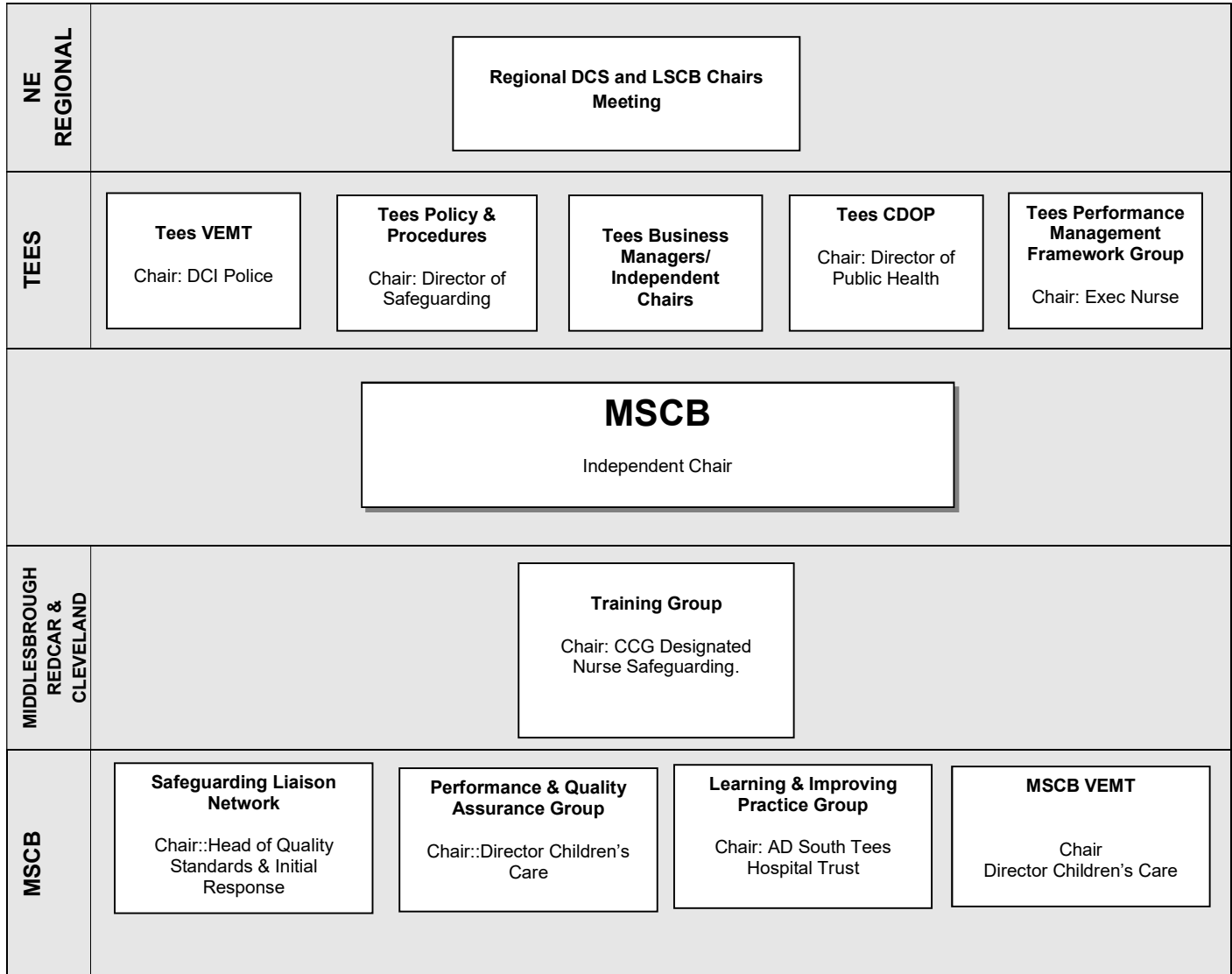
The MSCB has worked to improve the Governance of its functions and maintain its independence while strengthening its links with the Middlesbrough Health and Well Being Board and the Middlesbrough Achievement Partnership (MAP) as well as the newly re-constituted Children’s Trust Board.

#### Governance Structure: Review/Consider/ Challenge

Review/consider	Drives Performance	Drives Audit and improved practice	Drives Guidance for change	Crisis/Spikes	Task & Finish Groups
MSCB Meeting : all board members consider	Board updates, board approves, board challenges	Learning & Improving Practice Sub Group – Change/challenge drives audit program	Tees Procedures Sub Group Working Together Audit Findings	Ofsted Inspection SCR/LR Tees Performance Framework Out of Area LAC Learning Reviews	For example: Finance review eSafety Review Migrant Impact Review
Board members chair subgroups	Performance & Quality Assurance Group	Training Sub Group prepares professionals to improve practice	Safeguarding Implementation Group – communication strand for professionals Audit Findings	Ofsted Inspection SCR/LR Digital Safeguarding agenda driving agenda	
Senior staff from agencies consider issues.	ADSC meeting	MSCB Network	Safeguarding Liaison Sub Group Audit Findings	Ofsted Inspection SCR/LR ADHOC specific meetings	

This table highlights the process by which the MSCB reviews, considers and challenges agencies over safeguarding issues arising in the course of the year.

**MSCB REGIONAL/SUB REGIONAL AND SUB GROUP SAFEGUARDING STRUCTURE 2017-2018**



## MSCB WORKING SUB GROUPS

The work of the MSCB is supported by a number of sub groups.

### Middlesbrough Groups

#### Performance & Quality Assurance Group

Monitors child protection and safeguarding activity on an inter-agency basis on behalf of the MSCB in order to identify areas of concern to the Board and promote continuous improvement.

#### Work this year:

The group has reviewed and responded to the Tees Performance Framework and reported to the board on two occasions.

- Q1-Q4 data reviewed
- Q1 and Q4 summary reports action planned and reported to the board

The P&QA group has presided over and participated in the following audits over the period:

- Child Protection and Substance Misusing Parents Audit 2017
- Neglect Audit 2017
- Safer Referral audit January 2018
- Middlesbrough VEMT Audit

The group has monitored the action plans for the above audits and taken responsibility oversight of the Tees Section 11 Audit process.

The chair and performance manager are members and therefore sit on the Tees Performance Framework Group which enables feedback from the Tees group on data refining/themed deep dive reports.

#### Training Group

With a South Tees footprint, this group ensures that appropriate high quality multi-agency training is provided for statutory agencies that reflect MSCB policy and procedure, enhances knowledge and skills and promotes joint understanding of child protection work.

**Work this year:**

In total, **1,354** candidates attended face to face training sessions during the 2017-2018, **62** taught sessions were delivered.

In addition to the courses delivered as part of the LSCB Training Programme, Childhood Injuries Prevention training was commissioned by Middlesbrough Public Health and access to this training was made available to candidates eligible to access LSCB training.

The Quality Assurance Programme process consisted of the following:

- Each course in the Training Programme was subject to a quality assurance evaluation
- Trainers (in-house and independent) are notified of the evaluation process
- The evaluator was either a member of the Training Sub Group or their appropriately nominated representative
- The evaluator introduced themselves to the trainer(s) at the beginning of the course explaining why they were there in attendance
- The evaluator was required to complete the LSCB Standards for Multi-agency training courses form and send it to the LSCB Training Support and Development Officer
- This evaluation, the course materials and also the participant evaluations, completed on the day of the course, were considered by the Training Sub Group and other training products modified to reflect feedback.

This evaluation process has enabled the Training Sub Group to deliver courses which met the aims, objectives and standards required.

**Learning & Improving Practice Sub Group (LIPSG)**

This LIPSG oversees the quality assurance of all Serious Case Reviews and other Learning Reviews to monitor and evaluate SCR/Learning Review action plans and to advise the MSCB Chair if the criteria for commissioning a SCR, as outlined in Working Together to Safeguard Children, may have been met.

**Work this year:**

- The MSCB chair has commissioned 2 serious case reviews and one learning review over this reporting period and the LIPSG has had an overview of the process from initial decision making to implementation of review recommendations.
- LIPSG is monitoring the multi-agency action plans pursuant to the reviews and reviewing single agency action plans progress.
- Reviewed and remodelled the Learning Framework for Middlesbrough
- Monitored the outcomes of national reviews of relevance to Middlesbrough

- Participated in discussion regarding the development of the new safeguarding arrangements pursuant to the Child & Social Care Act 2018.

### **Local Vulnerable, Exploited, Missing and Trafficked (VEMT) Group**

To co-ordinate agency work in these key areas at a local level overseeing the work of the VEMT practitioner group and reporting to both the MSCB and the overarching Tees Strategic VEMT group.

#### **Work this year:**

The following items were reviewed and actioned by the group:

- Tees VEMT Feedback: Action Plan update with the Middlesbrough position
- Middlesbrough CSE/Missing Scoping/Inspection Preparation work
- Sexting Scrutiny Report – Action Plan update
- VEMT Audit
- Middlesbrough CSE as part of the Joint Strategic Needs Assessment
- Barnardo's CSE Police VEMT Team Role
- Tees Digital Safeguarding Group:
- Motivations of CSE Offenders: Disrupt, Treat, Manage
- Trusted Relationships – Expression of Interest
- Reviewed and developed the CSE Screening Tool

### **Safeguarding Liaison Group**

An informal group for professionals to share safeguarding concerns with a direct link to the MSCB for any issues or feedback.

#### **Work this year:**

The group has met on three occasions in this period and a number of issues have been discussed with updates for the MSCB agenda including policy and procedure updates.

## **Tees-wide Groups**

### **Tees-wide Policy & Procedures Group**

Responsible for reviewing and amending existing policies and procedures and for developing new ones based on experience, research findings, government and professional guidance and the recommendations of case reviews.

### **Work this year:**

Procedures agreed during 2017/18 so far are as follows:

- Breast Ironing
- Child Death Overview Panel (CDOP) Procedures
- Child in Need (Cain) Procedures
- Child Protection Medical Assessments
- Children Missing from Home or Care
- Cross Boundary Procedure (CP transfers)
- CSE Screening Tool
- Dangerous Dogs Procedure & Risk Assessment Tool
- Discontinuing the CP Plan
- Parents Recording Professionals
- Quoracy at CP Conferences, Reviews and Core Groups
- Safeguarding Disabled Children

Work currently underway includes:

- CiN Cross Boundary
- Complaints Procedure
- Immobile Babies (Bruising in Children)
- Investigating complex (organised or multiple) abuse
- Parental Mental Illness
- SAFER Referral Form
- Unborn Baby Procedure

The Tees LSCB's Safeguarding Procedures website continues to be monitored and updated as appropriate.

### **Current Position**

TPG members feel that there is a clear and effective structure and process in place which has resulted in a reduction in the backlog of outstanding work and provides a firm foundation for work over the coming year.



## Tees Child Death Overview Panel

This group provides a forum that allows for a professional multi-agency examination of all child deaths within Middlesbrough and, by identifying associated dangers and risks, it seeks to improve the safety and welfare of children. Public health and safety issues allow for wider environmental and social benefits to be also addressed.

**See Chapter 8**

## Tees Vulnerable, Exploited, Missing and Trafficked (VEMT) Group

Takes a strategic overview of this key area of work and directs implementation of complementary strategies across the local operational groups.

### Work this year:

- Refreshed terms of reference.
- Terms of reference have been devised for a 'Digital Safeguarding Group' to replace the e-safety group.
- The VEMT Strategy and Action Plan are currently being revised.
- Work to achieve the strategy is formulated into an action plan with 27 areas identified for focused attention. Progress against the action plan has been made over the last year; 18 actions are completed (green), 9 actions have made progress but are not yet complete (amber) and there are no actions outstanding with no or little progress made.
- Refreshed Tees Missing from Home and Care Protocol.
- The CSE Commissioning Group have completed a Tees CSE Joint Strategic Needs Assessment to inform collective commissioning of services.
- Tees Performance Management Framework data in relation to VEMT has been reviewed to ensure consistency across Tees and enable better analysis.
- Voice of the Child increased focus with Barnardo's "Tees Youth Take action project" and the Blossom Project questionnaires, changes to the audit tool to include voice of the child, obtaining the views of those exiting the VEMT process and Middlesbrough have appointed a voice of the child participation officer.
- An audit regime of VEMT cases in place to inform best practice and learning.
- CSE training events were held with attendance of 152 people from a wide range of agencies.
- Tees Conference : Voice of the Child/Stand Up to Child Abuse

### **Other task-limited working groups**

The MSCB may appoint working groups for specific tasks. The terms of reference and membership of such groups will be agreed by the Board.

### **MSCB ATTENDANCE**

As part of the governance arrangements attendance at the MSCB and associated working sub groups is monitored and reported to the board.

The attendance of MSCB core members over the past year on average was **53%** compared to **68% in the previous year**, with approximately **35%** of members achieving attendance of over **80%**. The elected lead member for Well-Being Care and Learning continues to support the MSCB and has attended **66%** of board meetings.

The Independent Chair meets regularly with the Local Authority Chief Executive, Executive Director of Wellbeing, Care and Learning and the elected lead member for Wellbeing, Care and Learning.

3 Lay Persons continue to attend the both the MSCB and some of the sub groups and bring experience from a wide range of professional backgrounds.

### **LINKS TO OTHER BODIES AND FORUMS**

In order to carry out its responsibilities satisfactorily the MSCB must also ensure that there are appropriate links to other bodies and forums including the following:

Tees Adult Safeguarding Board – TSAB  
Safer Middlesbrough Partnership  
Youth Justice Board

MAPPA (Multi-Agency Public Protection Arrangements – via Durham Tees Valley Probation  
MARAC (Multi Agency Risk Assessment Conferences)  
Police & Crime Commissioner.

These links are achieved through existing members of the MSCB and associated officers.

### **MSCB AND THE CHILDREN TRUST.**

The MSCB has continued to strengthen links to the Children and Young Peoples Trust, with the MSCB independent chair a member of this group. The MSCB also liaises with the Middlesbrough Achievement Partnership to distribute safeguarding information direct to schools. The broader children and young peoples' agenda will be picked up by these groups with the MSCB monitoring progress to reinforce the safeguarding agenda in this area.

## MSCB AND THE MIDDLESBROUGH HEALTH & WELL BEING BOARD

The MSCB has developed links with the Health & Well Being board in Middlesbrough. Discussions have taken place between the MSCB chair and the Director of Public Health, the MSCB chair attends on an annual basis to present the MSCB Annual report and update the Health and Well Being Board on any safeguarding matters arising. The Director of Public Health is a member of the MSCB and has presented both the Public Health Strategy and the Public Health Annual report to the board as public health arrangements continue to be delivered on a South Tees footprint basis.

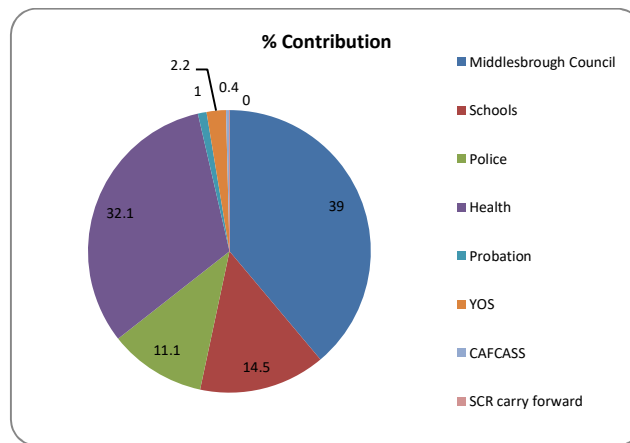


## MSCB FUNDING

The MSCB operates a legally constituted pooled budget and the activities of the board, including publications, inter-agency training and administration, are met by financial contributions from the following partners:

- Middlesbrough Council
- Middlesbrough Schools
- Cleveland Police
- South Tees Clinical Commissioning Group
- Durham Tees Valley Probation/National Probation Service Cleveland (50/50)
- CAFCASS
- Youth Offending Service

**CHART 6: MSCB FUNDING**



## MSCB BUDGET 2017-2018

Funding Agency	£	£ SCR Additional Funding	£
Middlesbrough Council	50,800	7,167	<b>57,967</b>
Schools	21,500		21,500
Police	14,401	2,032	<b>16,433</b>
Health	41,847	5,801	<b>47,648</b>
Probation	1,158		1,158
YOS	3,239		3,239
CAFCASS	550		550
SCR Carry forward	0		0
<b>Total Income</b>	<b>133,495</b>	<b>15,000</b>	<b>148,495</b>

## MSCB EXPENDITURE: PAST 5 YEARS

Expenditure	2013-2014	2014-2015	2015-2016	2016-2017	2017-2018
Employees	£71,102	£72,524	£73,975	£76,403	£76,403
Training	£30,000	£30,000	£30,000	£30,000	£30,000
Training/Learning Events	£5,000	£5,000	£5,000	£5,000	£2,500
Professional fees/SCRs	£35,000	£15,000	£10,000	£10,000	£20,000
Tees PMF Cont	-	-	-	£7,500	£8,000
CDOP contribution	£1,200	0	*	*	*
Supplies and Services	£1,500	£1,500	£1,500	£1,500	£300
Website Tees Procedure	£988	£988	£988	£988	£988
Communication	£1,500	£1,500	£1,500	£1,500	£300
Independent Chair	£18,638	£18,500	£12,500	£11,309	£12,500
<b>Total</b>	<b>£164,928</b>	<b>£151,463</b>	<b>£132,968</b>	<b>£136,700</b>	<b>£148,491</b>

\* Donates Funded by Public Health

MSCB finances are managed by Middlesbrough Council. The annual budget for the MSCB's activities covers the period from 1<sup>st</sup> April to 31<sup>st</sup> March and are presented for Board approval each year. The budget report includes the following:

- a financial statement for the preceding year's activity;
- a projection for the current year's activities; and
- an outline of spending proposals for the following financial year.

## MSCB BUSINESS UNIT

There are two members of staff working within the MSCB Business Unit, the MSCB Business Manager and MSCB administrator who are both directly employed through Middlesbrough Council



## OFSTED INSPECTION



Ofsted inspections of local authority children's services under the new "single" framework began in 2013 with all local authorities in England and their associated LSCBs to be inspected within three years. The inspection regime for Local Safeguarding Children Boards was agreed in 2014.

In November 2015, Ofsted announced the inspection of services for children in need of help and protection, looked after children and care leavers in Middlesbrough and a review of the effectiveness of the Local Safeguarding Children Board.

The Inspection took place between 24 November 2015 and 17 December 2015 with the resultant report being published on 19 February 2016

### Findings:

Children's services for Middlesbrough requires improvement to be good

1. Children who need help and protection – requires improvement
2. Children looked after and achieving permanence
3. Adoption performance – Good
4. Experiences and progress of care leavers – Good
5. Leadership, Management and Governance – requires improvement
6. The MSCB was judged as requiring improvement

The Ofsted response to the Annual report 2014-15 was:

*The annual report 2014–15 is a thorough document. It includes a clear description of the local context and what has improved over the last year. Successes detailed include the development of the VEMT groups, the neglect strategy and the learning framework.*

The MSCB inspection action plan was signed off by the board April 2017

### Tees Performance Management Framework

In 2016 the MSCB data set used previously was replaced by the Tees Performance Management Framework (Tees PMF) and the MSCB was able to review a much broader range data on a quarterly basis.

The Tees PMF dataset contains a number of key indicators covering a wide range of subjects including:

- Child Protection Activity
- Looked After Children
- VEMT (Vulnerable, Exploited, Missing, Trafficked)
- CAMHS (Children and Adolescent Mental Health)
- Accident and Emergency
- Domestic Violence

The data is divided into the following sub sections:

- Enable children/young people to live healthy lives
- Providing the right support for children/young people
- Ensuring children/young people are safe.

The dataset enables the MSCB to assure itself on four fundamental questions:

The dataset is shared with partners via updates at Board and Performance and Quality Assurance group meetings and is used to:

1. Identify any changes, patterns or trends that require either a single or multi-agency response
2. Identify what actions agencies may need to take in relation to changes in data, identifying priorities for the MSCB audit schedule and commissioning multi-agency audits
3. develop work plans for MSCB sub groups
4. direct the focus of the MSCB Business Plan

## **SERIOUS CASE REVIEWS (SCR) / LEARNING REVIEWS (LR)**

### **Learning & Improving Practice Sub Group**

The MSCB established the Learning and Improving Practice Sub Group (LIPSG) in 2014. The sub group is made up of standing members of the board at a strategic level and is the first port of call for any serious incidents or any cases that need consideration for a SCR process. Once agreed the LIPSG will prepare a report for the Independent Chair to consider the case for SCR.

### **SCR's Undertaken.**

The MSCB has been required to submit 2 SCR's to Ofsted in this year

Middlesbrough Safeguarding Children Board is committed to the robust monitoring of SCR action plans both inter-agency and single agency. This monitoring of SCR's is carried out by the MSCB LIPSG, which is chaired by a senior Police Officer with membership comprising of senior officers from a range of agencies across the borough.

The MSCB is committed to embedding the learning from SCR s in order to drive forward progress in safeguarding children and young people and will consider recommendations from other local, regional and national SCR's to inform local practice.

### **The key Learning Points include:**

- Professionals should use the details in a plan to monitor and evaluate progress
- Plans and multi-agency meetings should capture the voice of the child and their lived experience
- Successful interventions to support families affected by parental substance misuse must depend on holistic approaches.
- When working with cases of neglect it is a risk that professionals will become reactive to each individual incident.
- There are benefits in providing preventive work and early access to help and support for children.
- The effective use of information, rather than just the recording of information, is critical to effective safeguarding arrangements

### **Learning from National Reviews.**

Learning from the Biennial Review of Serious Case Reviews nationally has also been noted as well as points highlighted from the Ofsted Reports "Learning Lessons". It is the role of the LIPSG to consider the learning from National and Regional SCR and ensure it impacts on the development of safeguarding practice locally as necessary. This learning is taken into



consideration when considering quality and effectiveness issues locally and in the development of any multi-agency protocols.

### Learning Reviews.

In the past year the MSCB has commenced one Learning Review:

Case Carl – followed the death of a young person linked to the management of diabetic condition, the review is expected to be complete by September 2018.

### Auditing

The MSCB has an audit schedule, which is coordinated through the Performance & Quality Assurance sub group. The schedule, which is designed in a multi-agency environment and be responsive to issues highlighted locally via the LIPSG as well as those issues identified both regionally and nationally. It includes governance audits which examine single and multi-agency policies, procedures and governance arrangements as well as case file audits aimed to improve understanding of practice and identify good practice.

The audits and quality assurance activities which the MSCB has undertaken between April 2017 and March 2018 are as follows:

Audit/Quality Assurance Activity	Type of Activity
Section 11 Audit	Bi-Annual governance audit deferred to Sept 17
Domestic Abuse Audit	Themed Audit
SAFER Referral	Themed/Case file audit
VENT/VPG	Themed Audit/Case File audit
CP Parental Substance Misuse	Themed Audit
Neglect Audit	Themed Audit/Case File Audit
CAMHS Child not Brought	Themed Audit

### SECTION 11 AUDIT

Section 11 of the Children Act 2004 places a duty on individuals and organisations to ensure that children and young people are safeguarded and that their welfare is promoted in the undertaking of their functions.

The section 11 audit commenced in September 2017 with other Tees LSCB's allowing coterminous agencies to complete the audit once for all relevant LSCB's and to ensure shared learning. The results will be reported in the next MSCB Annual Report.

## SECTION 175/157

Section 175/157 of the Education Act outlines the safeguarding governance that must be in place within all schools. The Local Authority Education, Inclusive Learning Support Team are responsible for auditing that compliance. The S175/157 monitoring forms will be counter-signed by the Chair of the requisite schools Governing Body. The quality of the information supplied is cross referenced against the Local Authority Child Protection database that holds records of all Child Protection training accessed by education staff against individual schools. Where gaps in safeguarding arrangements /compliance are identified, formal notification is sent by the Local Authority Education Director and to the respective head teacher / principal. Schools are expected to develop their own action plans in relation to any areas for development highlighted.

Analysis for the academic period suggests that the education sector in Middlesbrough continues to have a sound understanding of its statutory safeguarding responsibilities and individual settings can clearly identify both strengths and areas for development. The Inclusive Learning Support Team will continue to monitor Section 175/157 returns with a view to developing strategies that support and develop practice improvement and strengthen school support in areas that need support.

### Recommending and Monitoring Key Outcomes and Indicators

The MSCB Plan is a three year plan with supporting audits to be undertaken as the plan develops. The audit program is driven by the Learning & Improving Practice Sub Group (LIPSG) and the findings derived from reviews and learning events for example the following audits have been planned for 2018:

- SAFER Referral Audit
- CSAFE Audit – in line with the JTAI CSA in family settings
- Children with Disability Audit

#### Key outcomes from the audits included the following:

- Review the process of sharing of minutes of meetings with involved parties.
- Review the recording of key information.
- Compliance with guidance and procedures.
- Ensuring the child is kept at the centre of any intervention.
- Consideration of a child as part of a wider family system and the need to involve all relevant family members and partner agencies in interventions.
- Information sharing and awareness of the parental vulnerability.

Data has identified key indicators which merit further challenge/investigation such as:

- Child Poverty figure for Middlesbrough 34.5 compared to 20 nationally
- Child Protection for Neglect remained at the 60% level

- High number of Domestic Abuse incidents reported to Police.
- The number of other local authorities LAC residing in Middlesbrough has increased.
- The number of Middlesbrough LAC has increased.
- 45 young people subject to VPG as at March 2017.

### **Tees PMF Data – Middlesbrough Key Points for Consideration**

**LSCB 01** - vaccination rates – Middlesbrough’s performance based on the latest data from Public Health England (2016/17) has remained broadly in line with 2015/16 remaining better than for England, but below the North East average..

**LSCB 02** – conception rates – there have been no further updates from Public Health England that the data reported at Q1 2017/18, where it was noted that there was an improving trend although higher than Tees, North East and England averages for the 15-17 age group. For the 13-15 age group Middlesbrough is better than the North East, but higher than the Tees and national averages.

**LSCB 03** – assessment factors – There has been an increase in the rate of Single Assessments for Middlesbrough from 399.8 per 10,000 children at Q4 2016/17 to 457.1 at Q4 2017/18. In line with the previous year, Middlesbrough continues to have a lower rate of assessment activity compared to the Tees average (lower than for the other Tees local authorities). Of the completed assessments with factor information, Middlesbrough has sustained high percentages (well above Tees and national averages) in certain factors such as substance misuse; domestic violence; mental health; neglect and emotional abuse.

**LSCB 04** – NEETS – Q4 2017/18 has seen an improvement in the proportion of 16-17 year olds who are NEET from 4.2% for Q4 2016/17 to 3.3%, lower than for the other Tees local authorities and better than for the North East, but higher than for England. The proportions of those whose status is “Not Known” has improved from 1.3% for Q4 2016/17 to 0.6% for Q4 2017/18 and although higher than the Tees average is better than for the region and England. At 14.6% the proportion of 16 to 17 year old NEETS that are Looked-After Children has increased from 11.7% for Q4 2016/17 and remains higher than for the other Tees local authorities.

**LSCB 08 – 10** – Children in Need, Child Protection Plans and Looked-after Children – the rates of Children in Need, children subject to a Child Protection Plan and Looked-after Children have increased from 2016/17 and continue to remain higher than for the other Tees local authorities. The rates of children at each level without a history of Early Help Assessment, has shown a good improvement from the previous year although continuing to be higher than the Tees average.

**LSCB 11 – Domestic Abuse** – the rates of children witnessing a domestic abuse incident increased for all Tees local authorities for 2017/18 compared to the previous year, although Middlesbrough has continued to remain higher than for the other Tees local authorities. The proportion of children witnessing abuse incidents within 12 months of a previous incident has continued to reduce and is better than the Tees average.

**LSCB 12 – Referrals to the Channel Programme** – the rates of children in Middlesbrough recorded as victims of violence against the person offences have at Q4 2017/18 have increased from the previous year and have remained higher than the Tees average. Similarly, although numbers are very small, the rate of children living in a household with an adult referred to the Channel Programme is higher than the Tees average.

**LSCB 15 – Violence Against the Person Crimes** – The rate of violent crimes has increased across the Tees in 2017/18 compared to the previous year, with Middlesbrough's rate higher than for the other Tees local authorities. Crimes where children are recorded as the victims of sexual violence have also increased across the Tees with Middlesbrough higher than the Tees average.

**LSCB16 – Second / Subsequent Child Protection Plans** – the proportion of children have been the subject of a second or subsequent Child Protection Plan has reduced steadily during the year. At 3.1% at Q4 2017/18 Middlesbrough's rate is better the other Tees local authorities and less than half the Tees average of 8.5%, improving significantly on the previous year's performance of 12.9%.

**LSCB17 – First Time Entrants** – the rate of First time Entrants to the Youth Justice System have increased across the Tees for 2017/18 compared to the previous year with Middlesbrough higher than the Tees average rate of 30.9 per 10,000 10 to 17 year olds at 40.6. The rate of those who are Looked-after Children has decreased and at a rate of 2.3 is better than the Tees average rate of 2.7 per 10,000 children aged 10 to 17.

**LSCB19 – Missing Children Episodes** – a higher proportion of children are reported missing four times or more within 6 months than the Tees average and increasing from the previous year. Although the proportion of those that are Looked-after Children at 47.9% is higher than the Tees average of 41.1% it represents a significant decrease on the position at Q4 2016/17 of 83.1%.

## CHAPTER 7

### THE RIGHT PEOPLE IN THE RIGHT PLACE TO DO THE JOB



### WORKFORCE, TRAINING & DEVELOPMENT

National research “Canary in a Cage” indicates that protecting children is a staff intensive process and staff are the primary resource of any service. This makes staff recruitment, retention and development critical for all partner agencies. For this reason, the Social Work Task Force (2009) has also drawn attention to the need to make better use of local data on workforce forward planning

#### Middlesbrough Social Care Workforce: September 2013-2017

Year	Num of SW	Num of Vacancies	Vacancy Rate	Num of new starters	Num of SW who left	Turnover Rate	Num of Agency Workers	Agency Worker Rate
2013	83.3	3	3	14	15	18	3	1
2014	139	14	9	17	14	10	10	7
2015	150	14	9	30	25	17	x	x
2016	154	4	2.8	51	4	2.6	5	3.1
2017	171	18		91	18	10.5	x	x

The table is taken from the Social Care Workforce published figures 2013 - 2017. SW indicates Social Worker.

The published workforce figures show an increase in social workers in September 2017 from **154** in September 2016 to **171** per head count an increase of **11%**

The number of vacancies in 2017 in the department increased from 4 in 2016 to 18 an increase of **350%**, the vacancy rate increased from 2.8%.to 10.5%, however this is in line with regional increases in staff turnover.

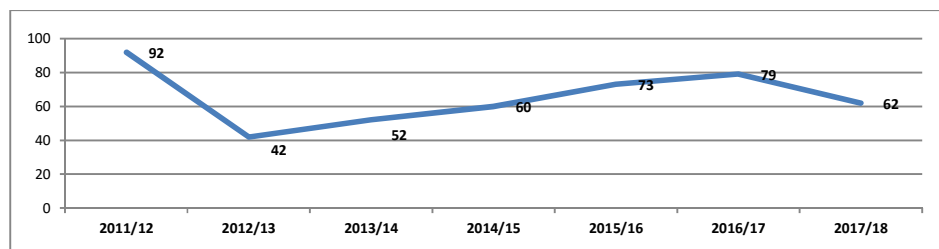
The average caseload per social worker reduced in this period from **22.6** to **17.4** compared to September 2016. The figure also compared favorably with the national caseload figure of **17.8** and a North East regional caseload figure of **18.3**

## Safer Recruitment and Managing Allegations

The Managing Allegations against Adults Policy has now been agreed across Tees and signed off by the MSCB. The MSCB receives a report annually from the LADO and the following figures and key areas were noted:

During the period April 2017 and March 2018 the Middlesbrough Local Authority Designated Officer (LADO) received a total of **62 referrals** this has reduced compared to 2017.

**CHART 7: LADO REFERRALS 2011 to 2017**



The majority of referrals to LADO were received from the employing agency of education teaching and non-teaching.

## Training

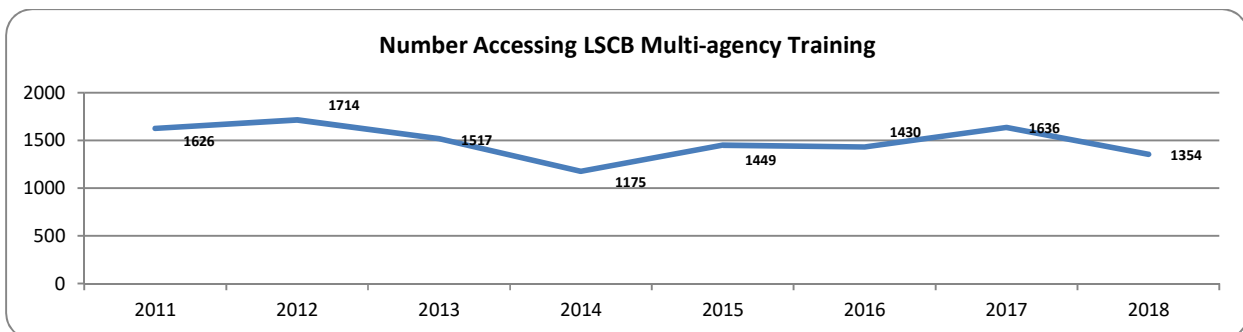
Safeguarding multi-agency training is delivered on a South Tees basis covering Middlesbrough and Redcar & Cleveland. In this financial period Middlesbrough invested £30,000 on multi-agency training this includes the cost of e-learning and a 50% contribution to the cost for the training coordinator.

## Training Achievements

During the period 2017 to 2018, 22 different training courses were delivered (see page 39), many of the courses were repeated two or three times dependent upon need and demand. A total of 62 taught courses and 4 bite size sessions were held.

In total across Middlesbrough and Redcar & Cleveland **1,354** staff have attended training sessions around **507** were attended by professionals working in Middlesbrough. It is estimated that the total number of applications across both local areas for e-learning was around **2,000** and eLearning continues to be an important part of the training programme. To date more than **15,000** staff and volunteers have completed the Awareness of Child Abuse & Neglect and the refresher training alone.

- Safeguarding Adolescents
- Attachment Theory
- Communicating with Children, including hearing and considering the voice and views of the child
- Core Level 3
- Core Level 3 Update
- Safeguarding Children & Young People in Within a Culturally Diverse Environment
- Safeguarding in a Digital Age
- Disguised Compliance – including toxic trio and professional challenge
- Domestic Abuse – general awareness
- Emotional Abuse
- Fabricated and Induced Illness
- Female Genital Mutilation, Forced Marriage and Honour Based Violence
- Neglect
- The Impact of Parental Mental Ill Health on Parenting
- The Impact of Parental Substance Misuse on Parenting
- Recognition and Response to Physical Abuse
- Risk Assessment and Risk Analysis
- Risk Assessment and Risk Analysis Workshop
- Child Sexual Abuse – Victims and Perpetrators
- Child Sexual Exploitation
- Suicide and Self Harm
- Safeguarding the Unborn and New born Baby, from conception to 6 weeks old

**CHART 10: MSCB TRAINING 2011—2018****Key Training Achievements include:**

- Level 3 Core Training rolled out and evaluation continues to establish this as the best delivery model for this training.
- Training recognised as good practice by Ofsted Inspections and Peer Reviews.
- eLearning package continues to be a success with additional modules including Domestic Violence.
- Specialist courses run with most being run twice per year.

## **MSCB DEVELOPMENTAL AREAS**

The work of the MSCB in respect of quality and effectiveness has focused over the past year on improving safeguarding across the range of presenting needs predominantly driven by SCR/LR recommendations/action plans, multi-agency audits and inspection outcomes.

### **Business Plan and Performance**

The focus provided by the revised Business Plan 2017-2020 has allowed a planned approach. However it must be acknowledged that this work can only continue with the full commitment of partner agencies to provide staff and resources with which to undertake this work.

The Tees Performance Management Framework has continued to be developed in this year and further implementation of more qualitative deep dive reports will be forthcoming in the next year.

The MSCB has revised the Learning Framework which will further strengthen the safeguarding provision in Middlesbrough.

### **Finance Schools/Colleges**

In 2013 the Middlesbrough Achievement Partnership withdrew central funding for the MSCB and schools were approached independently with regard to contributing to the work of the board. 41 schools were able to contribute in the last financial year as a consequence of the MSCB changing the financial request to the school academic year rather than the financial calendar year.

A continuing challenge for the forthcoming year will be to liaise with schools and raise awareness of the work of the MSCB and the importance of safeguarding in education. An added feature will be as more schools transition to academy status and therefore acquire more autonomy how the MSCB continues to engage in its supportive efforts.

### **Equality & Diversity**

Equality and diversity are important aspects of safeguarding and consideration must be given to issues of equality to ensure a consistent level of service and support across all groups in order to ensure the safeguarding and welfare of all children and young people in Middlesbrough.

The MSCB supports the work of the Local Authority's Inter-Faith Network and the BME Cohesion Network. The chair has attended the Middlesbrough Inter-Faith Network Group on several occasions and has presented at a Community Safeguarding event.



The MSCB is currently engaged in profile raising and a safeguarding audit with the faith groups of Middlesbrough and an interim report on this work is due at the end of 2018.

The MSCB training programs and Audit Programs all recognise equality and diversity and communicating with disabled children training has been developed and offered to professionals.

### **MSCB Website**

The MSCB website been re-designed and re developed and as part of this process sections and pages have been updated with current information to make a more streamline product. The website can be accessed on [www.middlesbrough.gov.uk/MSCB/safeguarding](http://www.middlesbrough.gov.uk/MSCB/safeguarding)

### **Private Fostering**

Private Fostering is when a child under the age of 16 years (under 18yrs if disabled) is cared for by someone who is not their parent or a close relative. It is a private arrangement made between a parent and the carer for 28 days or more. It does not include children looked after by the local authority.

It is the responsibility of the person caring for the child to notify the Well-Being, Care & Learning Safeguarding Service so that the child's needs can be assessed. If such arrangements come to the notice of a professional it is the responsibility of that professional to ensure that the carer is aware that they need to make the notification and to follow this up with a notification themselves if necessary.

The numbers notified to WC&L Safeguarding remain very low which is in line with the National figure. Throughout 2017/18 in Middlesbrough there were four Private fostering arrangements in place, 3 new notifications and 1 existing arrangement carried over from the previous year. Two private fostering arrangements concluded, one of which commenced in 17/18 and the other had commenced in 2016.

There remains concern that despite the awareness raising that has been undertaken the notifications received by the local authority have primarily been made by safeguarding social workers. This may suggest figures are not necessarily reflective of the actual number of private fostering arrangements within Middlesbrough. This is a similar picture Tees wide.

### **Digital Safeguarding - The Vision**

Children and Young People are actively encouraged and supported to enjoy the benefits of new technologies, whilst being provided with the guidance and skills to avoid risk and harm. Organisations, Parents and carers are given skills and knowledge through the e-safety strategy to guide and protect themselves and those they are responsible for. An independent review into the potential risks of children accessing potentially harmful or inappropriate material through the use of digital technology has been undertaken.

## CHAPTER 8



### WHAT HAPPENS WHEN A CHILD DIES?

The Tees Child Death Overview Panel (CDOP) reviews the deaths of children from the Hartlepool, Middlesbrough, Stockton-On-Tees and Redcar & Cleveland Local Safeguarding Children Board (LSCB) areas. The CDOP is a sub group of the 4 Tees LSCBs.

The role of the CDOP is to ensure that wherever child deaths occur, and under whatever circumstances, scrutiny of the cases result in recognised improvements that can be made to practice to improve the quality of care, as well as the safety of children. CDOP also identifies any relevant strategic issues and ensure that these translate into action within or between agencies. CDOP ensures that the team looking after children have the opportunity to discuss and reflect on the death, learn any lessons, and implement any helpful changes to practice or to systems of care.

The value of child death review, and the necessity for its coordination and scrutiny by a Child Death Overview Panel, has been understood nationally and remains a core component of the latest version of Working Together.

Tees CDOP is chaired by the Director of Public Health, Middlesbrough and Redcar and Cleveland, and the business management functions are undertaken by the RCSCB business support team.

### CASES REVIEWED BY CDOP 1 APRIL 2017 – 31 MARCH 2018

During 2017/18 Tees CDOP reviewed 12 Middlesbrough child deaths, the Tees Panel met 6 times during the year

LSCB	Neonatal	Older Children	Total
Middlesbrough	3	9	12

The table below shows the respective ages of the children when they died. In total 45 child deaths were reviewed during 2017/18.

LSCB	Neonatal <4 Weeks	4- 52 Weeks	1 - 4 Years	5 - 9 Years	10 - 14 Years	15 up to 18 Years	Total
Middlesbrough	3	3	1	1	0	4	12

## TOTAL CHILD DEATHS 2017/18

The table below shows comparative numbers of **total child deaths** for the current and previous 3 years.

	2014/15	2015/16	2016/17	2017/18	Total
<b>Middlesbrough</b>	13(5)	16(8)	13(2)	14 (8)	<b>56 (23)</b>

\*Numbers in brackets denote unexpected deaths

## RAPID RESPONSE MEETINGS HELD IN 2017/18

Following the successful implementation of the Rapid Response Process in 2015/16 a Rapid Response meeting is now held following unexpected deaths (with the exception of Neo-natal Deaths).

An unexpected death is defined as the death of an infant or child which was not anticipated as a significant possibility for example, 24 hours before the death; or where there was an unexpected collapse or incident leading to or precipitating the events which lead to the death.

The purpose of the Rapid Response Meeting is to:

- To help ascertain the provisional cause of death and identify any risk factors pertaining to it.
- To explicitly consider whether there are any safeguarding issues for surviving siblings, potential future siblings and other associated children
- Identify any urgent action to be taken by any agency
- To signpost to appropriate help and support for family/friends and staff where necessary
- To help gather information for Tees Child Death Overview Panel (CDOP) in a standard format.

A total of 16 rapid response meetings were undertaken in 2017/18 across the Tees area.

- 5 for Stockton
- 2 for Hartlepool
- 3 for Redcar and Cleveland
- 6 for Middlesbrough

Rapid Response meetings did not take place in respect of three unexpected deaths as they were neonatal cases which do not routinely require a Rapid Response meeting to be held.

It was agreed in 2017/18 that where a Rapid Response meeting and a Strategy meeting are to be held in respect of a Child Death then the meetings would be combined, given the similar nature and attendance at both meetings. One such meeting took place in 2017/18 which was well attended and positive feedback was received. This arrangement will continue in 2018/19.

## ISSUES OF NOTE

- **Safer Sleep Campaign** - once again all Tees LSCBs supported the Lullaby Trust's Campaign which took place 12-16 March 2018.
- **The Tees protocol for Sudden Unexpected Death in Infancy** was finalised in 2017/18.
- **Funding** - the four Tees Directors of Public Health have agreed to fund the costs of Tees CDOP in 2018/19.
- **Improved Links with Health Visiting and School Nursing** - In 2017/18 a representative from Health Visiting/School Nursing became a standing member of Tees CDOP.

## CHAPTER 9

### ISSUES & CHALLENGES & HOW DO WE KNOW WHAT WE ARE DOING IS WORKING.

The MSCB has continued to develop multi-agency arrangements in order to improve the safeguarding of children and young people of Middlesbrough over the last year. The MSCB has proven multi-agency working and co-operation which can be evidenced in the way in which agencies work with each other to safeguard children. Appropriate arrangements are in place to ensure that the MSCB meets its statutory functions as outlined in Working Together, the Local Safeguarding Children Board Regulations 2006 and Children Act 2004.

The last year has seen a number of changes to the MSCB, which have had a significant impact on the board as a whole, as well as the MSCB Business Unit specifically. While the ramifications of some of these changes continued into April 2018 and beyond, the MSCB has embraced and supported change, ensuring that the safeguarding and welfare of children and young people remained a priority for partners.

The most significant changes to the MSCB in 2017-2018 has been the publication of Working Together 2018, which is leading to a number of changes and actions designed to improve services and ways of working.

This has impacted on a number of aspects of the boards work ranging from a review of membership and links to other partnerships to revising performance and audit programs including reporting mechanisms. What seems like constant organisational changes in the Local Authority, Health and Police have also had their impact, however these changes have not affected the level of enthusiasm and professionalism of front line staff which has continued to be impressive?

A key area of concern has been the reduction in resources and the scale of the changes that this has enforced on agencies due to the economic climate. This has been raised in a number of safeguarding forums, and is an area the MSCB will continue to monitor.

In this year the MSCB has been required to commission two Serious Case Review (SCR). Learning from historical and National SCR's has been taken forward and embedded in safeguarding training and practice locally and the outcomes reviewed by the Learning and Improving Practice Sub Group (LIPSG).

The MSCB continues to focus on safeguarding children both locally and nationally while the Independent Chair strives to ensure independent scrutiny, appropriate challenge and accountability for all contributing agencies.

The MSCB continues to tackle the safeguarding agenda through its commitment to sub-regional and Teeswide projects including the Teeswide Child Death Overview Panel, The

Tees Vulnerable, Exploited, Missing and Trafficked (VEMT) group, the monitoring of and promotion of Teeswide eSafety strategies, the review, update and up keep of the web based Tees Child Protection Procedures and also ensuring compliance with guidance relating to the conduct of Serious Case Reviews.

As part of this annual report the MSCB has to consider and seek to address any challenges there may be in terms of safeguarding planning, development or practice and bring this to the relevant bodies of authority.

The work of MSCB is part of the wider context of partnership cooperation arrangements that aim to improve the overall wellbeing of children/young people in Middlesbrough.

The MSCB objectives are about coordinating and ensuring the effectiveness of what member organisations do both individually and collectively to safeguard and promote the welfare of children.

Any extended role or further functions for the MSCB will be determined through the wider partnership arrangements The MSCB and its partners will make sure that any extended role will not lessen the MSCB's ability to perform its core role effectively.

The challenges facing the MSCB continue to focus on raising awareness on how to further improve frontline practice and to demonstrate and evidence improved outcomes for children and young people. The MSCB has to therefore consider any service or practice issues that may be a focus for development in order to achieve this objective and to bring this to the attention of the Local Authority Chief Executive, Health & Well Being Board and Police Commissioner in order that they can drive through any required improvements that need to be made.

Improving access services and customer service continues to be identified in feedback from inspections as areas requiring improvement, therefore the review and understanding of current threshold processes has led to the further review of the MSCB Threshold Document which is available on the MSCB website. The threshold document covers both Middlesbrough and Redcar & Cleveland and is in line with the other Tees board areas therefore improving continuity on access to services across the Tees area.

The continued development and implementation of the Tees multi-agency performance management framework and dataset, which includes indicators that address local safeguarding issues and that measure the outcomes as well as activity will be an area of focus this coming year.

The Middlesbrough Neglect Strategy has been revised in line with the latest government guidance and National learning and will be launched in late 2018.

The further development of the VEMT (Vulnerable, Exploited, Missing, Trafficked) structure and governance arrangements with the Vulnerable Young Peoples (VPG) group becoming the VEMT Practitioners Group in line with other Tees LSCB VEMT groups. The agreement of a VEMT data set aligned again with and monitored by the Tees Strategic VEMT.

This year has seen the continued review of the MSCB audit program in line with the Ofsted Inspection plans and the development of themed audits driven by the Learning and Improving Practice Sub Group (LIPSG) work. The case file audit will also feed into agency audit processes and governance arrangements to drive improvement in practice and service delivery therefore bring improved outcomes for children and young people.

## OVERALL CONCLUSION

Evidencing impact on outcomes for children is a challenge facing all LSCB's. The emphasis is on improved practice and effective intervention, a process that cannot be measured in the short-term. The ways that this can be measured in addition to the use of the National Indicators that tend to measure processes or activity include:

- Practice audits.
- Assessing the impact on training on improved practice.
- Increased use of the My Family Plan (Early Help Assessment) for early intervention on safeguarding issues.
- Reduction in children with particular vulnerabilities requiring services.

These areas will continue to be considered by the Performance & Quality Assurance Sub Group.

Capacity of partner agencies in the last year has been stretched by an increasing local level of demand placed on them; by the requirements of central government, inspection regimes and by the general economic climate. This has led to some delay in the implementation of some actions.

The MSCB acknowledges the need to review its own capacity to undertake this work and to keep its priorities under review over the coming year

## KEY ACHIEVEMENTS

The MSCB has had one development session in addition to the bi-monthly meetings an evaluation of the MSCB performance so far in line with the Inspection requirements.

Attendance at the board and sub groups remains constant.

In this financial year 41 Middlesbrough schools contributed to the MSCB.

The Tees Performance Management Framework continues to be developed.

The Threshold document has been reaffirmed by the board and published on the MSCB website.

The MSCB website continues to be developed in line with the new Council website.

Learning from SCRs continues to be incorporated into the training program.

SCR and Learning Review action plans outcomes are monitored and reported to the MSCB as a standing item.

The Tees Safeguarding/Child Protection Procedures website continues to be extensively updated with policies, procedures and guidance and is extensively used by professionals and the public.

Between April 2017 and March 2018 approximately 507 sessions were attended by Middlesbrough staff. During this period 22 courses were held (including half day and full day courses).

E learning continues to expand with the introduction of several new courses such as a refresher in Child protection, Hidden harm and Safeguarding Children with disabilities. Over 15,000 applications for E learning courses have been completed.

Tees CDOP funding agreed for the next year and the implementation of Rapid Response continues to be successful.

The following audits have been completed:

- CP & Parental Domestic Abuse Audit
- CP & Parental Sub Misuse Audit
- Neglect Audit
- VEMT/VPG Audit
- SAFER Referral Form Audit.

MSCB newsletters and briefing notes distributed to over 500 front line professionals.



## **MSCB Supported Key Events 2017/2018**

The MSCB have continued to engage professionals, children and young people through events covering a range of topics, as noted below:

**26<sup>th</sup> September 2017:** Neglect Audit session

**6<sup>th</sup> October 2017:** Neglect Audit Evaluation.

**26<sup>th</sup> October 2017:** Review of Tees Procedures Website with CCP

**27<sup>th</sup> October 2017:** CSE JSNA complete.

**10<sup>th</sup> October 2017:** Review of Asylum Seekers and Safeguarding meeting

**22<sup>nd</sup> November 2017:** SCR Billy and Alex authors briefing session

**23<sup>rd</sup> November 2017:** Public Health & CDOP briefing

**4<sup>th</sup> -5<sup>th</sup> December 2017:** Inspection Workshop MSCB

**7<sup>th</sup> December 2017:** Annual Report to the Health & Wellbeing Board

**12<sup>th</sup> January 2018:** SAFER referral Audit

**16<sup>th</sup> January 2018:** Safeguarding in Community Groups briefing

**29<sup>th</sup> January 2018:** CSE & Missing – Independent Review

**2<sup>nd</sup> February 2018:** SCR Billy Learning Event

**21<sup>st</sup> February 2018:** Learning Review session for Carl

**6<sup>th</sup> March 2018:** MSCB Self-Assessment

**13<sup>th</sup> March 2018:** MSCB Website Review

**12<sup>th</sup> – 16<sup>th</sup> March 2018** - Safer Sleeping Campaign week beginning, supported posters and web links shared across Middlesbrough and across Teesside.

**18<sup>th</sup> March 2018:** National CSE day, MSCB circulate link to National website to all schools and publish on the Council Website and MSCB website.

**20th March 2018:** SCR Alex Learning Event

**21st March 2018:** SCR Billy re-call event

**eSafety** or **Digital Safeguarding** support to professionals via the circulation of various publications and the support of national eSafety campaigns.



## APPENDIX 1

