

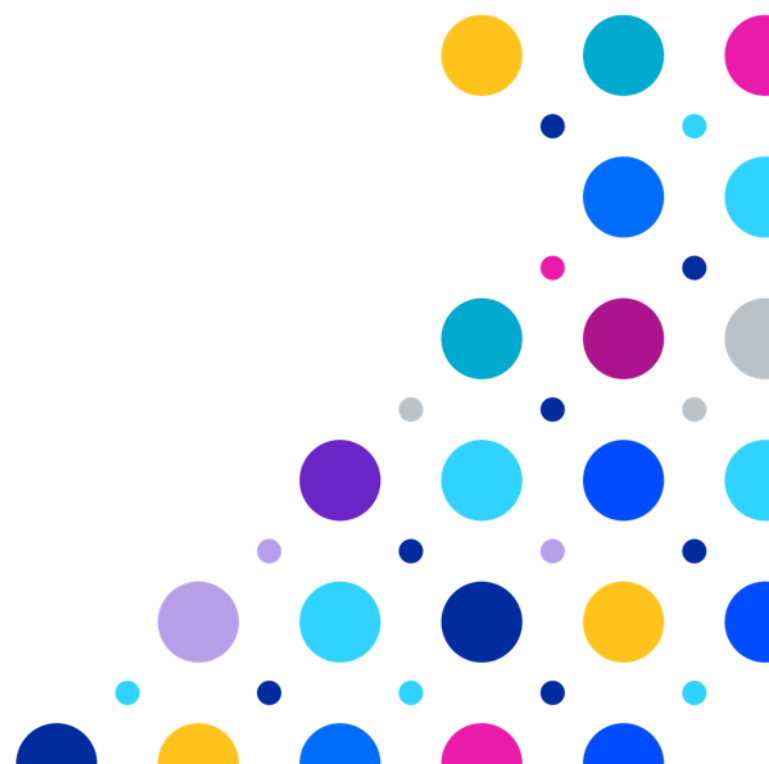
11 January 2022



South Tees Hospitals
NHS Foundation Trust

Middlesbrough Health Scrutiny

Safety and Quality First 

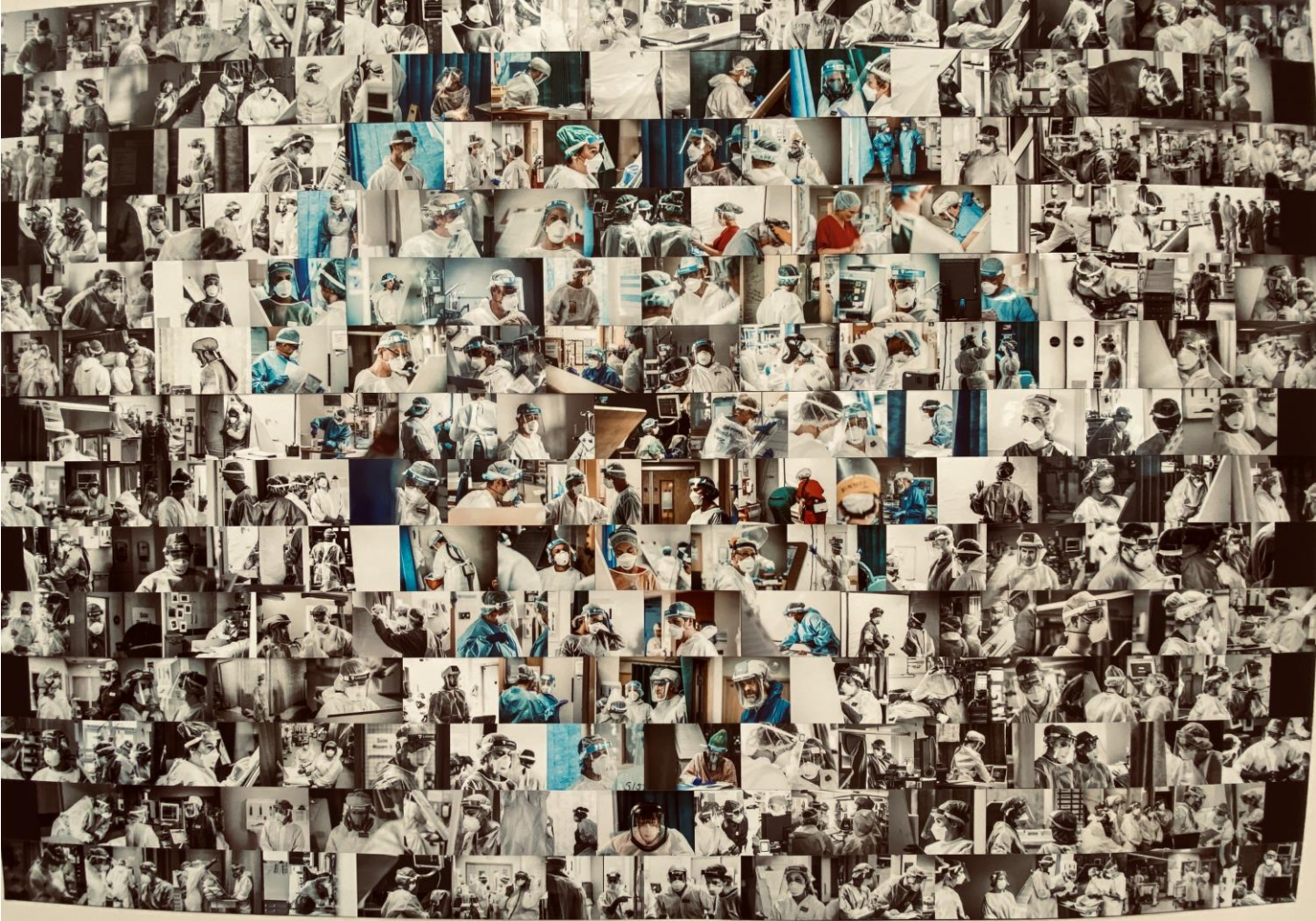




Year in review



Provided care for more than 4,000 patients with COVID-19



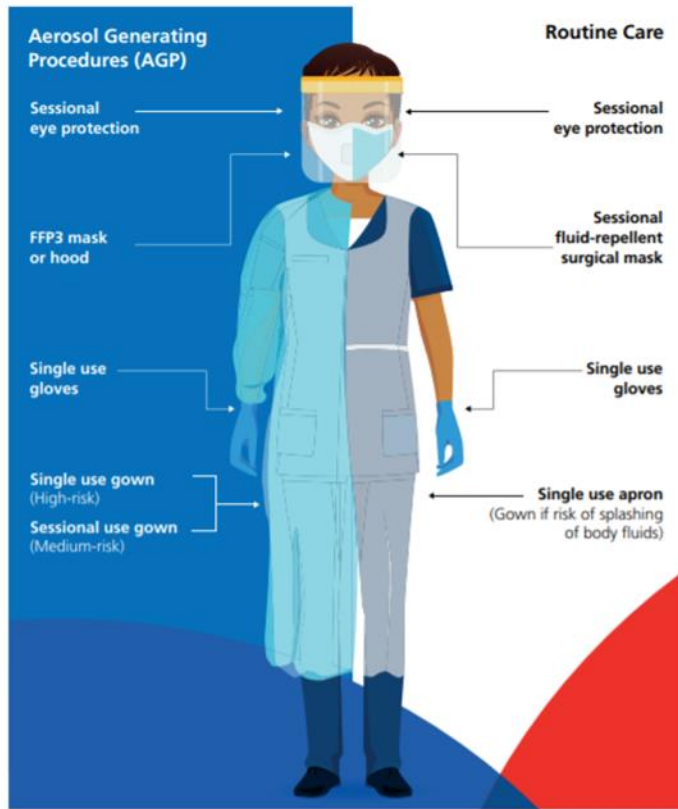
COVID and non-COVID pathways

COVID-19 PPE use for wards

Based on guidance for the remobilisation of services within health and care settings IPC recommendations



Red (High-risk) and Amber (Medium-risk) patients

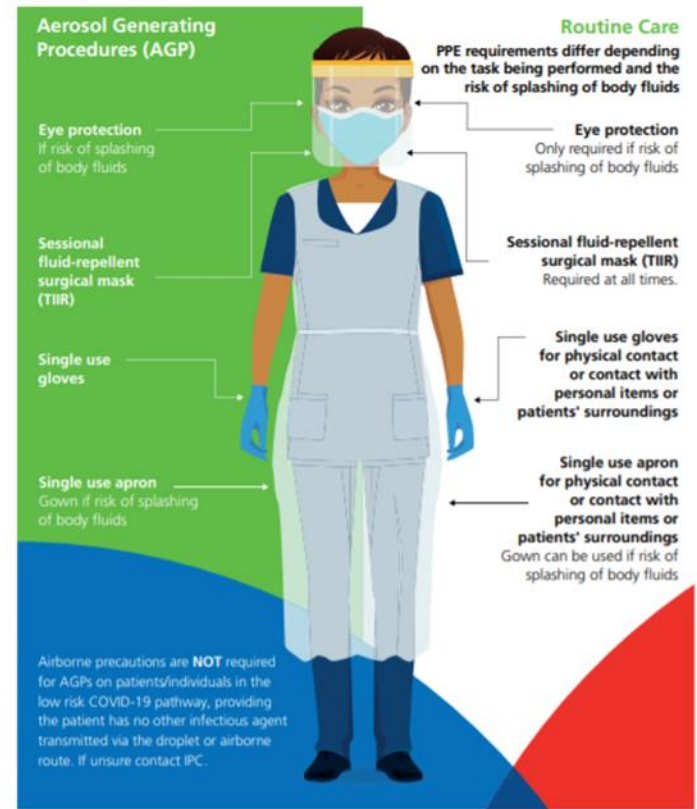


COVID-19 PPE use for wards

Based on guidance for the remobilisation of services within health and care settings IPC recommendations



Green (Low-risk) patients



Cardiothoracic and neurosurgery centres amongst the nation's highest performing centre

5



46,000 patients cared for overnight in hospital

6



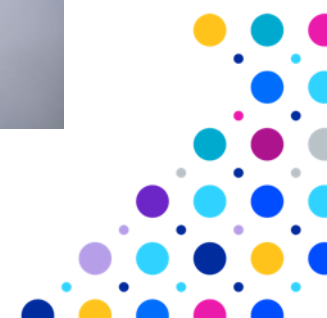
Cared for 79,000 patients who were able to return home the same day



665,000 outpatient appointments



150,000 urgent and emergency care attendances

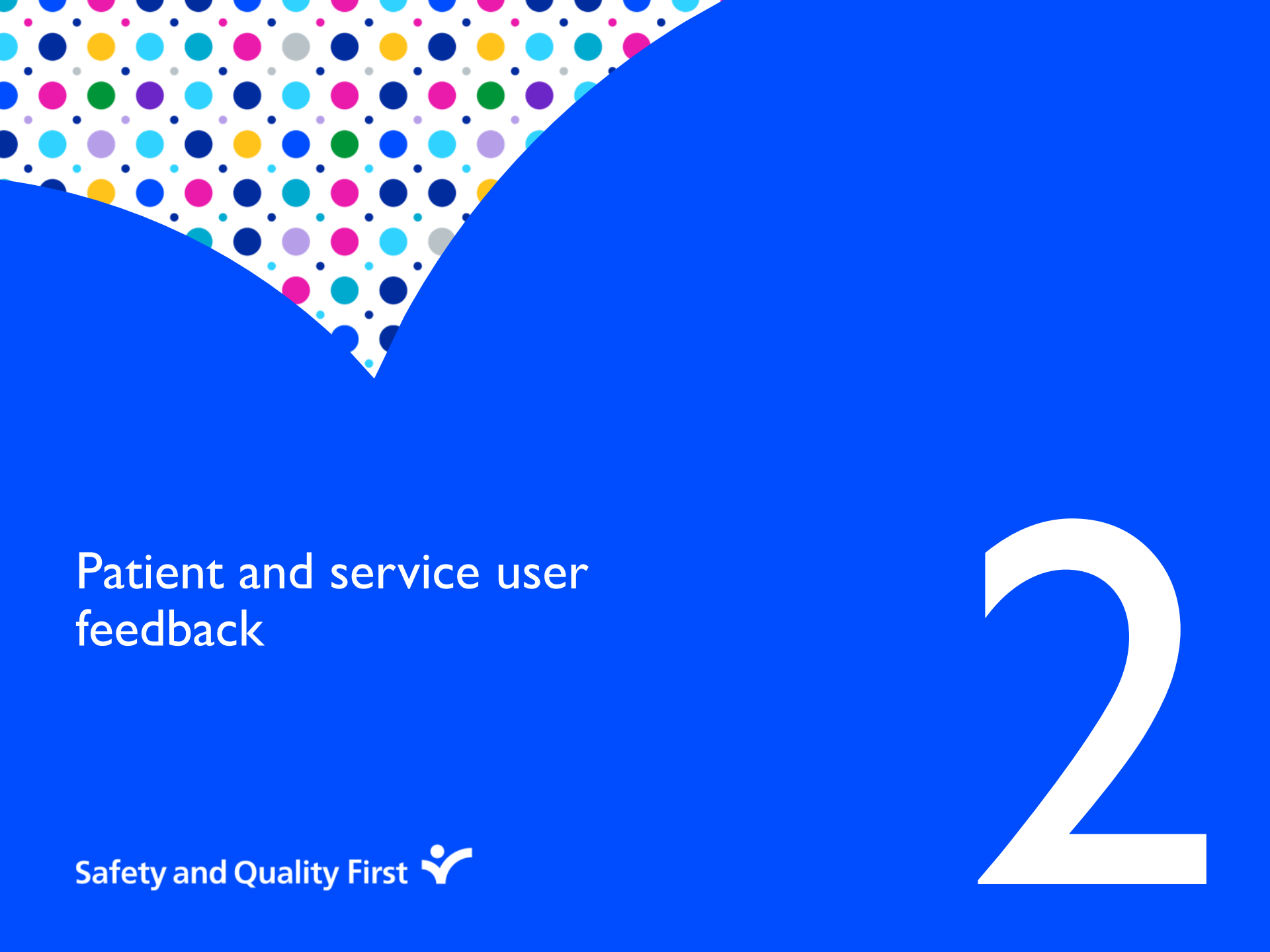


Community colleagues have delivered 1.25 million patient contacts



4,400 new babies delivered into the world





Patient and service user feedback

Safety and Quality First 

2

CQC 2020 children and young people's survey: amongst the nation's top performers



CQC 2020 adult inpatient survey: consistently above the national average for inpatient medical care





Omicron response

Safety and Quality First 

3



HM Government

BOOST YOUR IMMUNITY THIS WINTER

WITH THE FLU VACCINE + COVID-19 BOOSTER

Get vaccinated. Get boosted. Get protected.
nhs.uk/wintervaccinations

NHS



#doyourbit



The infographic is a 2x3 grid of colored panels. Panel 1 (red) features a blue emergency light. Panel 2 (blue) features red boxing gloves. Panel 3 (teal) features a heart-shaped bandage and social media icons. Panel 4 (pink) features a finger with a cut. Panel 5 (purple) features white pills. Panel 6 (blue) features a blue surgical mask. The NHS logo is in the top right of the grid.

1
Keep A&E free for
**LIFE THREATENING
CONDITIONS ONLY**

2
Protect yourself and
others from **COVID-19**

3 **NHS**
Protect yourself and
others from **FLU**

4
Use NHS services
SENSIBLY

5
**LOOK AFTER
YOURSELF** this
winter

6
Follow the rules
when visiting
NHS SERVICES





THANK YOU