

**FUTURES**

**FOR FAMILIES**

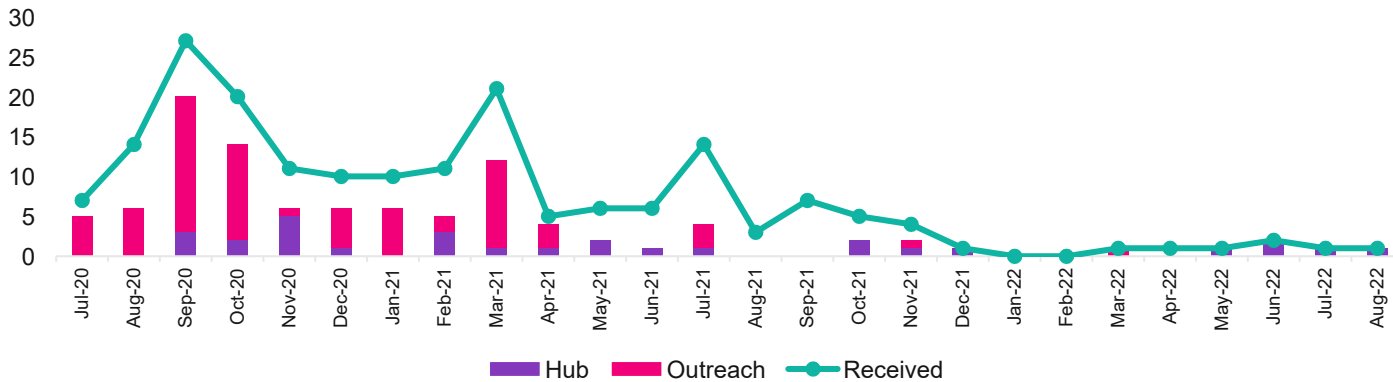


**Corporate Parenting Board**

# Our Referrals & Support

We have supported over 100 young people via the Futures for Families Team

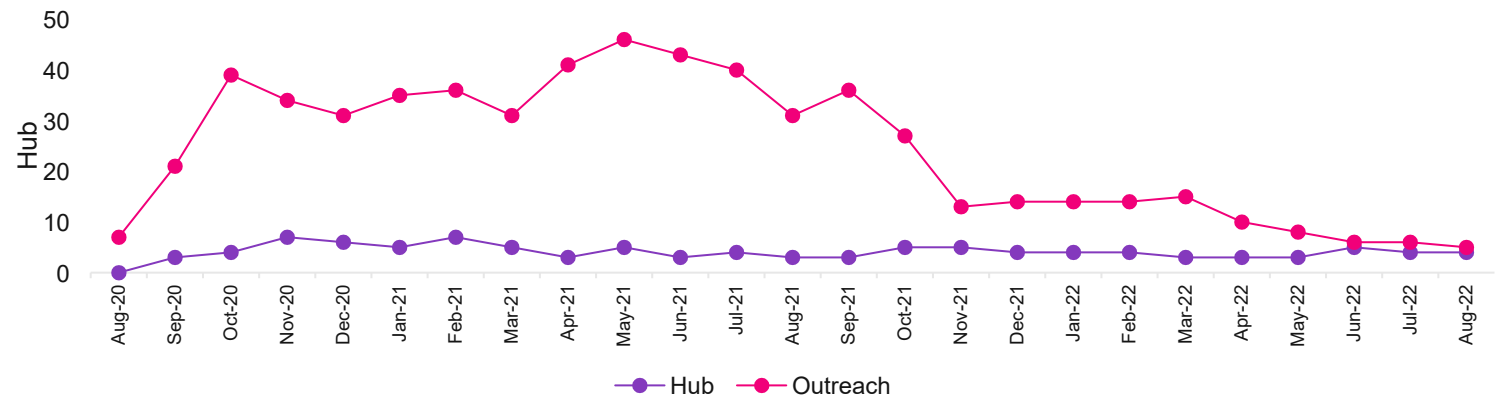
Referrals



82% of accepted referrals between Aug 21 to Aug 22 were for the Hub

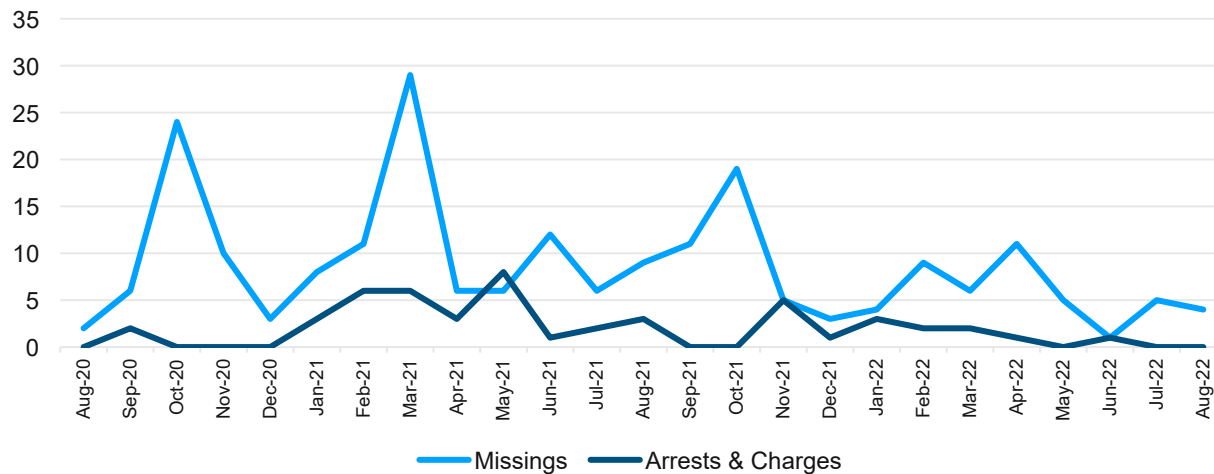
Numbers accessing the Hub have now started to increase, with 5 new individuals supported in the last 4 months.

Number Accessing Support



# Our Specialist Support

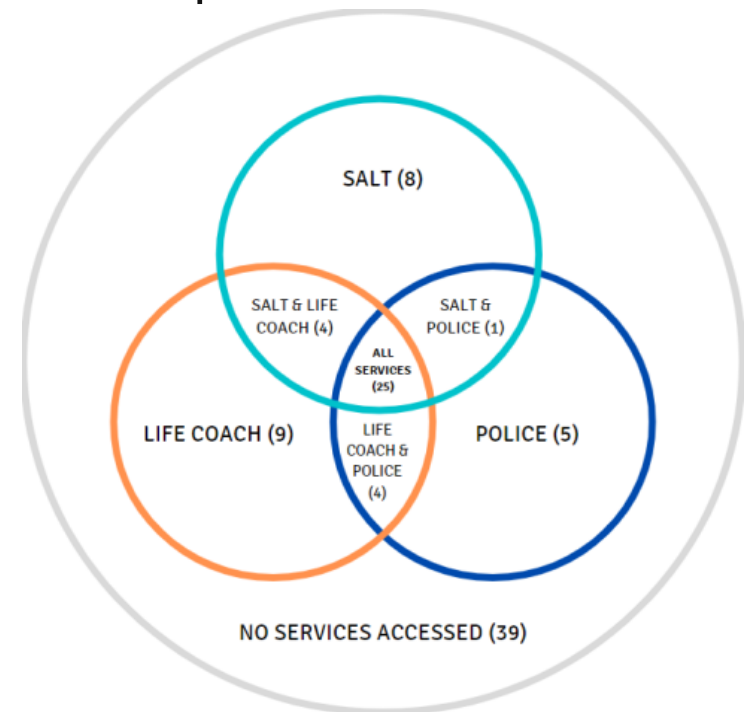
Police Involvement



Peaks in both missing episodes and arrests/charges coincide with new young people accessing FFF support. This is an expected increase due to the high risk nature of the young people that we focus our support on.

Overall within the Authority we have seen a 12.3% reduction in the number of missing episodes.

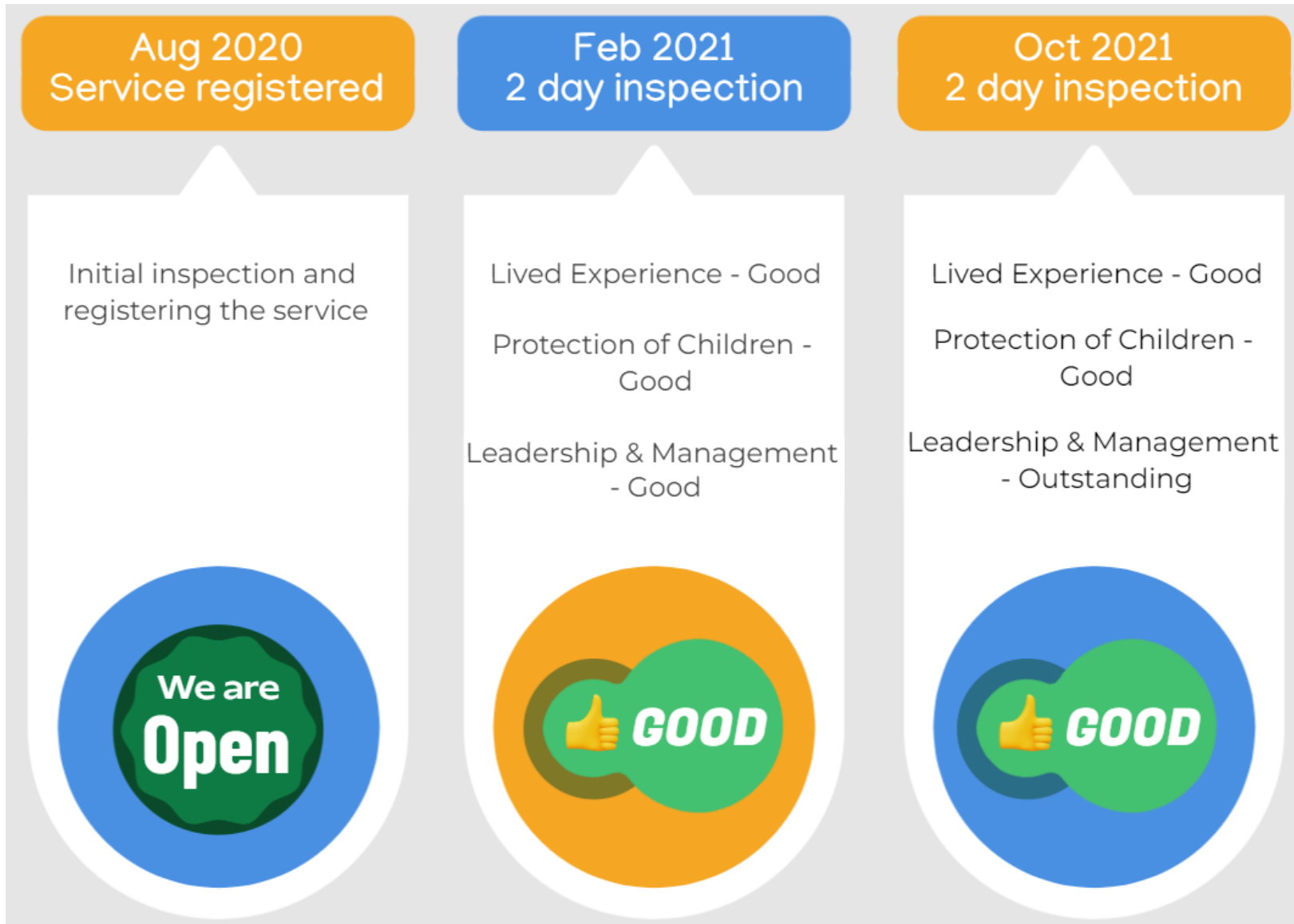
26% of young people accessing support access all specialist services



59% of young people supported accessed at least one specialist service

*Information correct as at 28/02/2022*

# Ofsted



# Our Impact (Cost Avoidance)

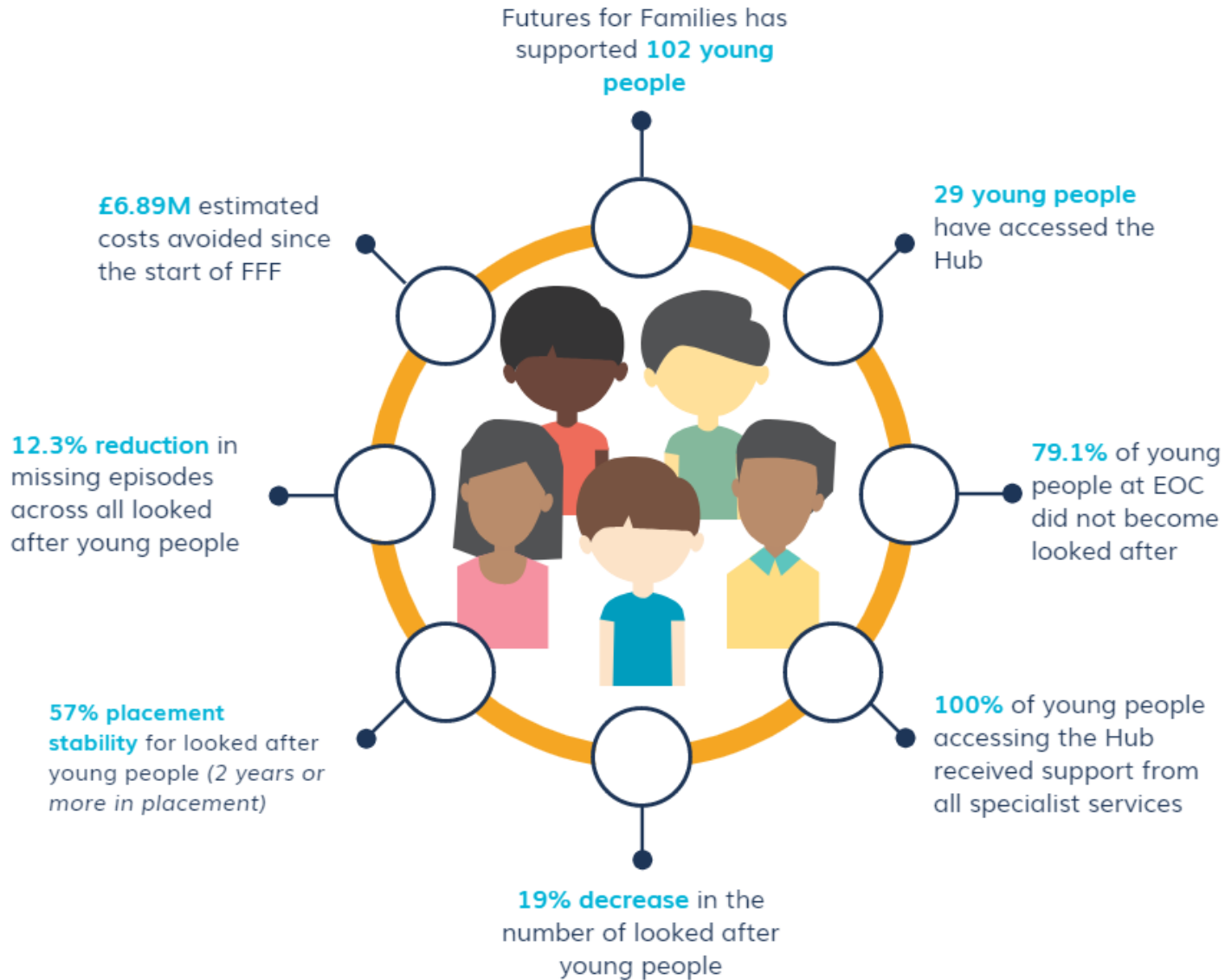
- ▶ **Estimated Cost Avoidance** *(calculations are based on estimated placements taking into account the risks provided on the young persons referral, a forecasted cost is then calculated up to the age of 18)*

Until YP is 18 or exits care	Overall	Police	Health	Placement
<b>Forecasted Spend <u>before FFF</u> intervention</b>	£39.02 M	£587.1 K	£128.7 K	£38.31 M
<b>Forecasted Spend <u>with FFF</u> intervention</b>	£17.17 M	£770.5 K	£70 K	£16.33 M
<b>Forecasted Cost Avoidance</b>	£21.85 M	-£183.4 K	£356.7 K*	£21.98 M

*\*includes £298,000.00 of funds received from NHS for supporting one individual*

- ▶ Estimated cost avoidance of 56% of forecasted spend.

# Our Young People



# Thank You Any Questions?

