

# Middlesbrough COVID-19 Update

8<sup>th</sup> December 2020



# North East & National Summary



## North East LA COVID Cases - Tested in Current 7 and Previous 7 Day Periods

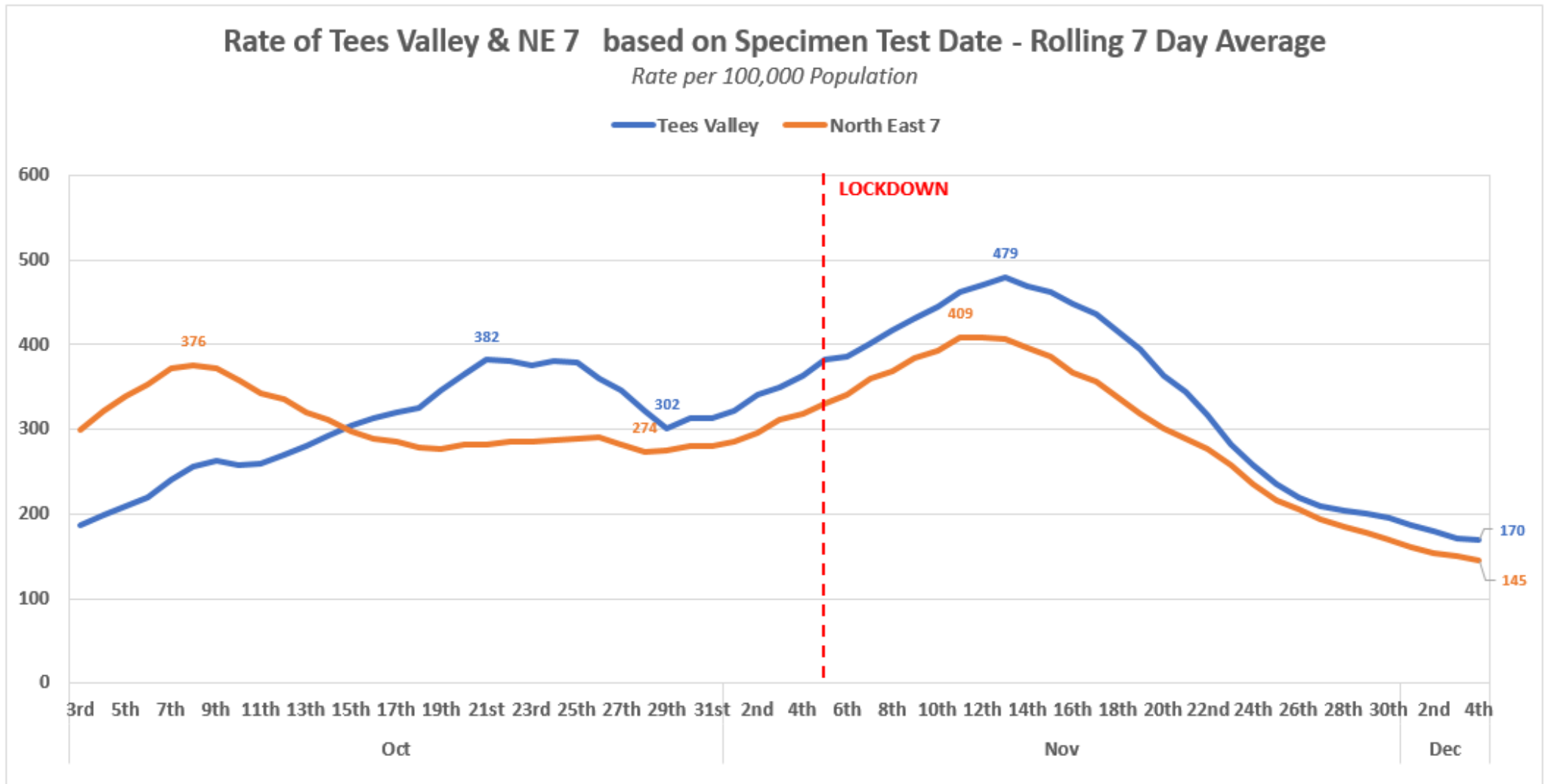
North East LA	Current 7-Day Period (28th Nov - 4th Dec)		Previous 7-Day Period (21st - 27th Nov)		% Change Rate
	Number	Rate	Number	Rate	
Hartlepool	204	<b>218</b>	253	<b>270</b>	<b>-19.4%</b>
South Tyneside	306	<b>203</b>	391	<b>259</b>	<b>-21.7%</b>
Darlington	199	<b>186</b>	271	<b>254</b>	<b>-26.6%</b>
Middlesbrough	253	<b>179</b>	264	<b>187</b>	<b>-4.2%</b>
Northumberland	458	<b>165</b>	489	<b>176</b>	<b>-6.3%</b>
Northumberland	505	<b>157</b>	592	<b>184</b>	<b>-14.7%</b>
Stockton-on-Tees	305	<b>155</b>	431	<b>218</b>	<b>-29.2%</b>
North Tyneside	298	<b>143</b>	460	<b>221</b>	<b>-35.2%</b>
County Durham	763	<b>144</b>	1,011	<b>191</b>	<b>-24.5%</b>
Redcar & Cleveland	187	<b>136</b>	198	<b>144</b>	<b>-5.6%</b>
Newcastle upon Tyne	363	<b>120</b>	564	<b>186</b>	<b>-35.6%</b>
Gateshead	192	<b>95</b>	345	<b>171</b>	<b>-44.3%</b>

Source - GOV.UK COVID Dashboard

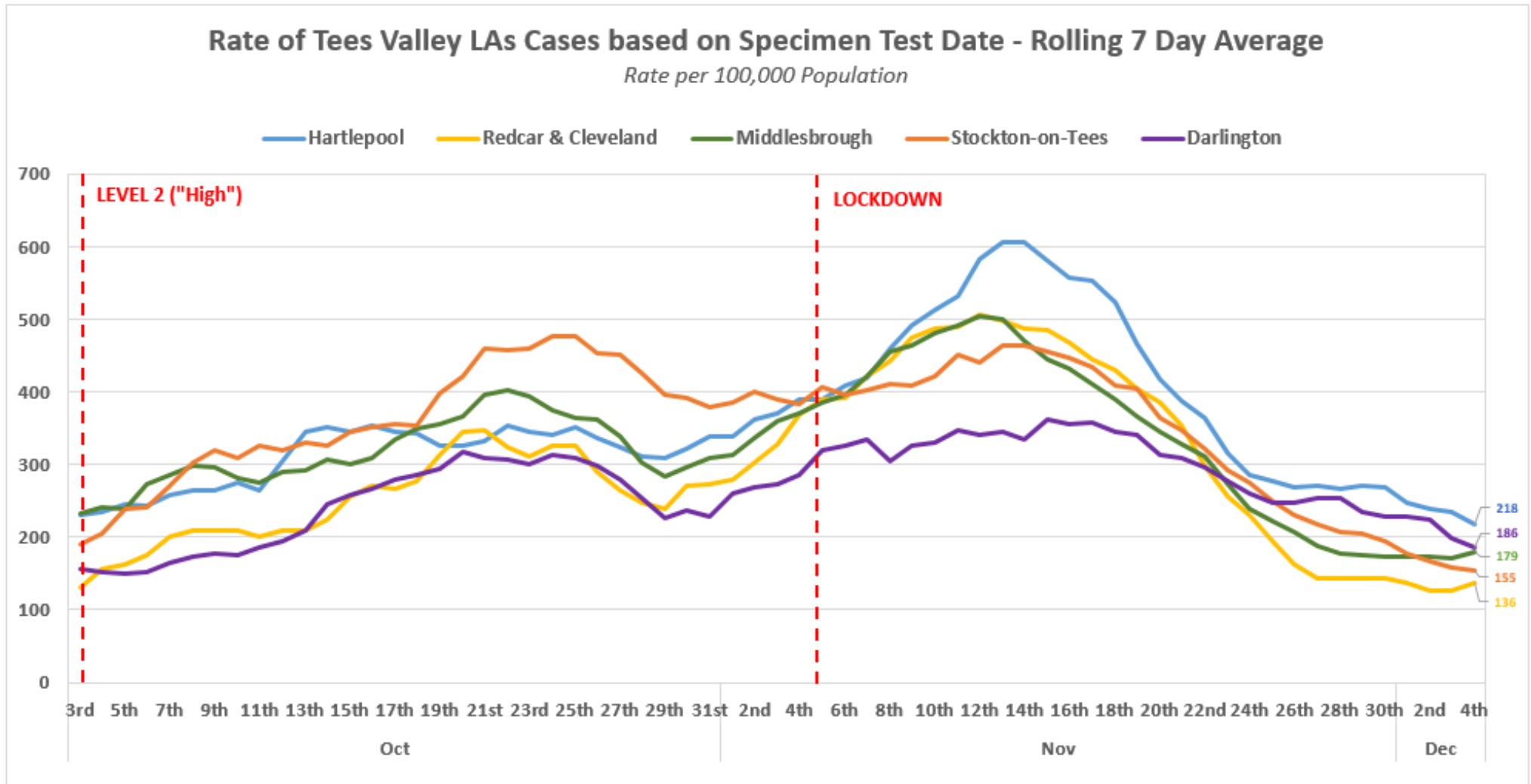
## National Rank – 7 Days up to 3<sup>rd</sup> Dec

Local Authority		Rate per 100,000
1	Medway	520
2	Stoke-on-Trent	364
3	Dudley	318
4	Slough	305
5	Redbridge	302
6	Leicester	296
7	Blackburn with Darwen	295
8	Kent	285
9	Sandwell	282
10	Kingston upon Hull, City of	281
11	Rochdale	275
12	Havering	274
13	Hartlepool	270
14	Wolverhampton	270
15	Barking and Dagenham	259
16	South Tyneside	258
17	Darlington	253
18	Luton	252
19	Lincolnshire	251
20	Walsall	251
49	Middlesbrough	188

# Tees Valley & North East 7 Rate



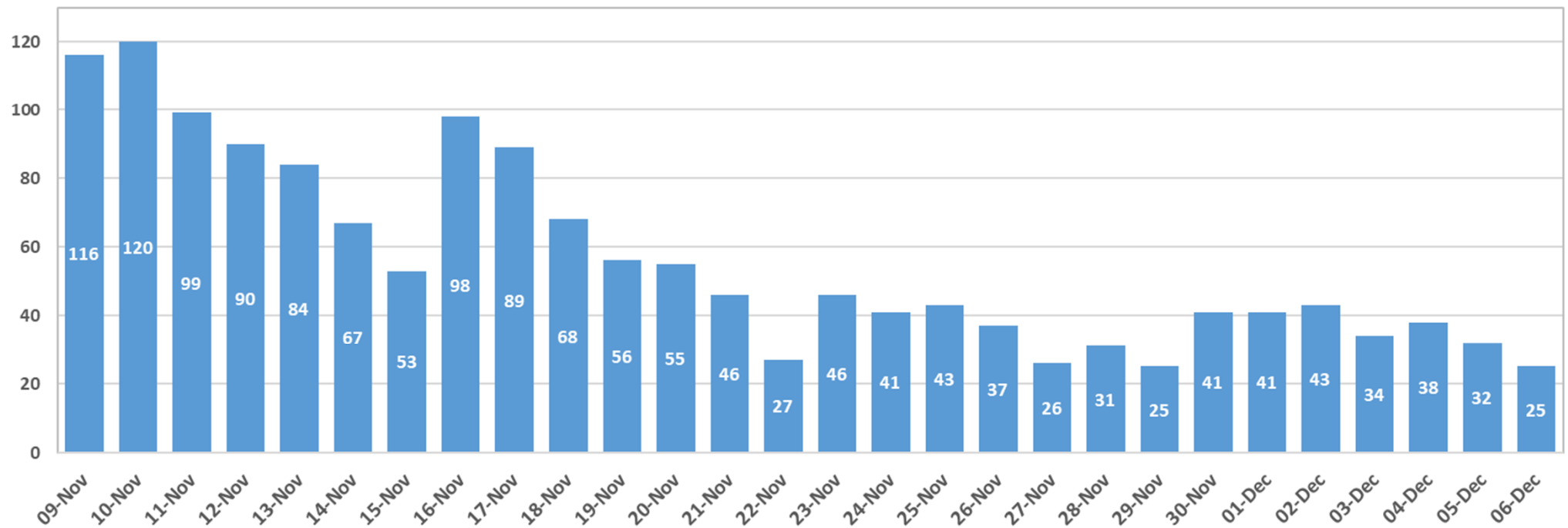
# Tees Valley Local Authorities



# Daily Cases



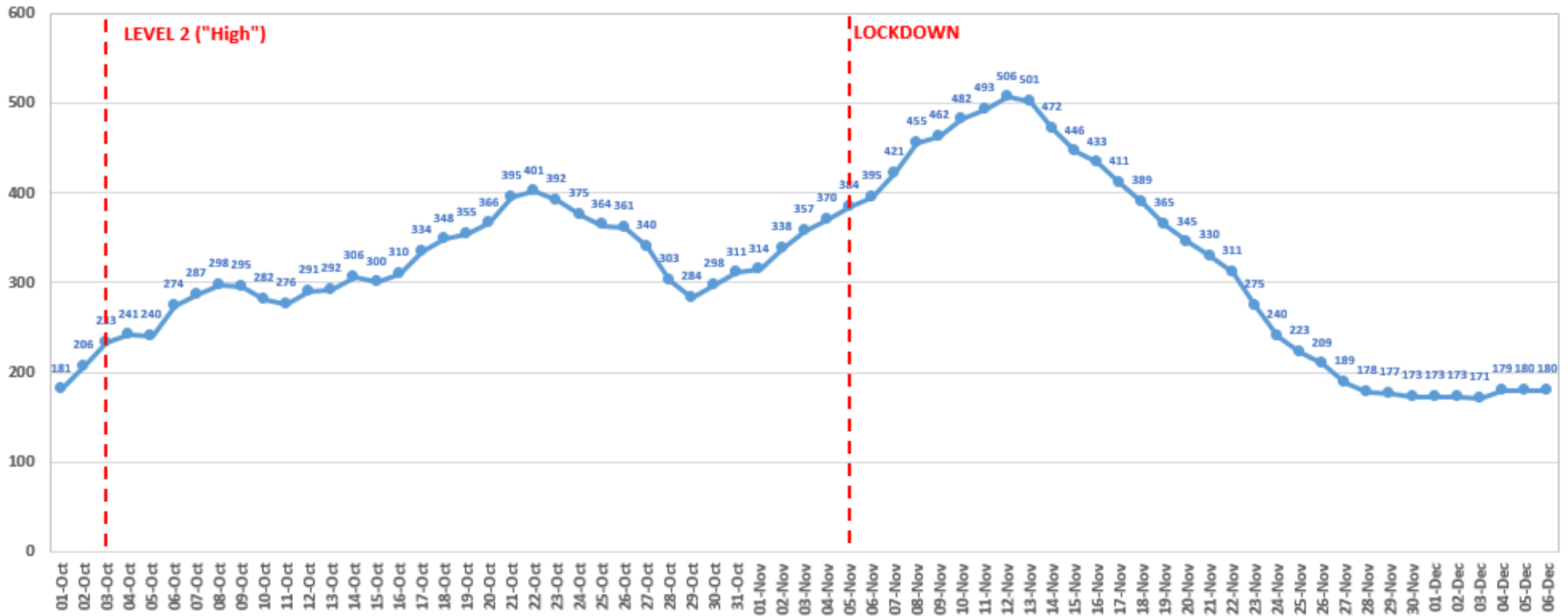
Middlesbrough Cases by Specimen Test Date - Previous 28 Days



# Rolling 7 Day Rate of Cases



Rate of Middlesbrough Cases based on Specimen Test Date - Rolling 7 Day Average  
Rate per 100,000



## Testing – Positivity %

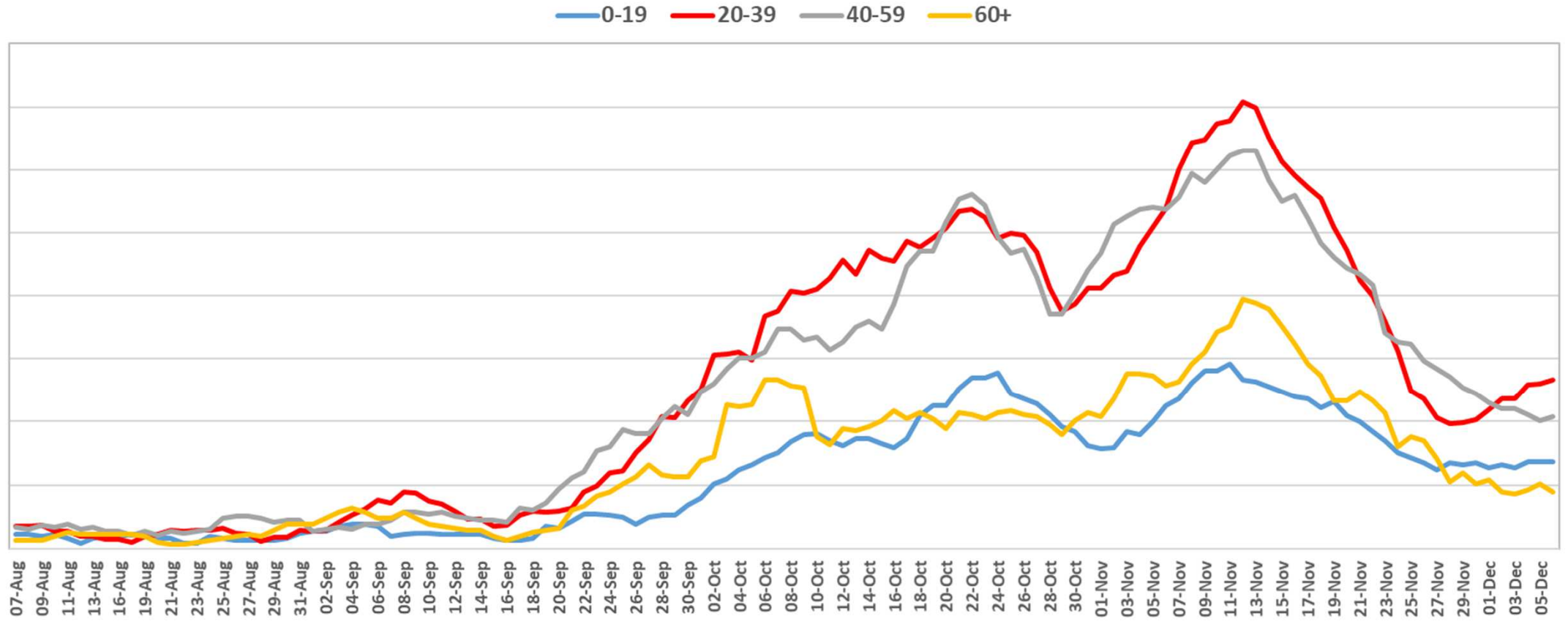


As of 05/12/2020	Positivity (%)	Change from previous day	Change from 7 days previous
<b>Middlesbrough</b>	6.9	0.1	-1.8
<b>Redcar</b>	6.8	-0.1	-2
<b>Hartlepool</b>	10.4	-1	-0.7
<b>Stockton</b>	10.2	-0.6	-2.2
<b>Darlington</b>	9.5	0	-0.7
<b>Tees Valley</b>	8.4	-0.4	-2.0
<b>North East</b>	7.3	-0.1	-2.1
<b>England</b>	6	-0.1	-0.9

# Analysis by Age Group (7 day rolling averages)



Middlesbrough COVID Cases by Specimen Date - Rolling 7 Day Rate by Age Group per 100,000





# Testing and Positivity by Ward



1<sup>st</sup> Sep – 2<sup>nd</sup> Dec, excluding care home testing

MOST  
DEPRIVED



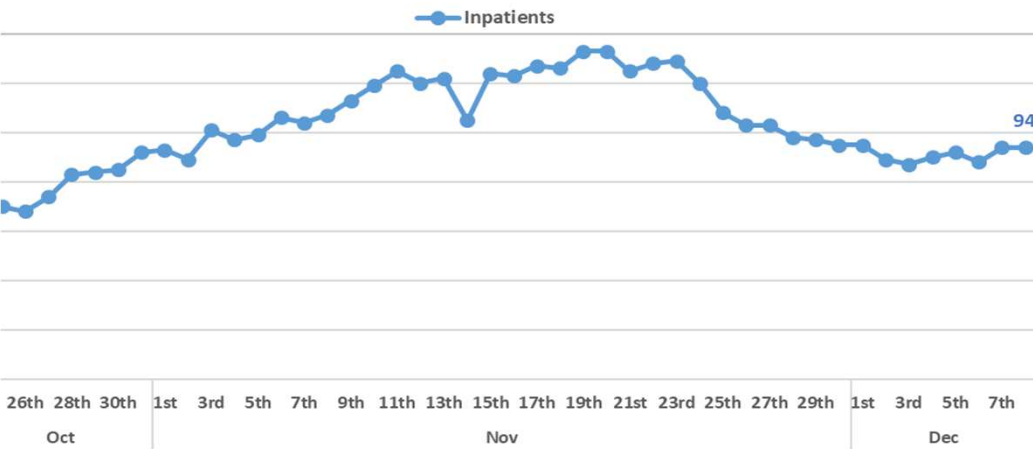
LEAST  
DEPRIVED

Ward	Pop.	Negative	Positive	Total	Positive %	Rate
North Ormesby	3,068	577	100	677	14.8%	221
Brambles & Thorntree	8,697	2,502	279	2,781	10.0%	320
Berwick Hills & Pallister	9,154	2,370	265	2,635	10.1%	288
Newport	12,078	2,474	324	2,798	11.6%	232
Park End & Beckfield	7,756	2,087	349	2,436	14.3%	314
Longlands & Beechwood	10,691	3,177	418	3,595	11.6%	336
Central	12,783	2,693	329	3,022	10.9%	236
Hemlington	6,330	1,729	231	1,960	11.8%	310
Ayresome	6,141	1,716	224	1,940	11.5%	316
Park	9,776	2,534	395	2,929	13.5%	300
Ladgate	5,395	1,500	288	1,788	16.1%	331
Coulby Newham	8,528	2,235	263	2,498	10.5%	293
Stainton & Thornton	2,931	753	81	834	9.7%	285
Linthorpe	6,488	1,677	245	1,922	12.7%	296
Kader	5,170	1,178	150	1,328	11.3%	257
Trimdon	4,819	1,386	198	1,584	12.5%	329
Marton East	5,342	1,526	230	1,756	13.1%	329
Acklam	5,645	1,446	221	1,667	13.3%	295
Marton West	5,298	1,247	209	1,456	14.4%	275
Nunthorpe	4,890	1,210	186	1,396	13.3%	285
Total	140,980	36,017	4,985	41,002	12.2%	291

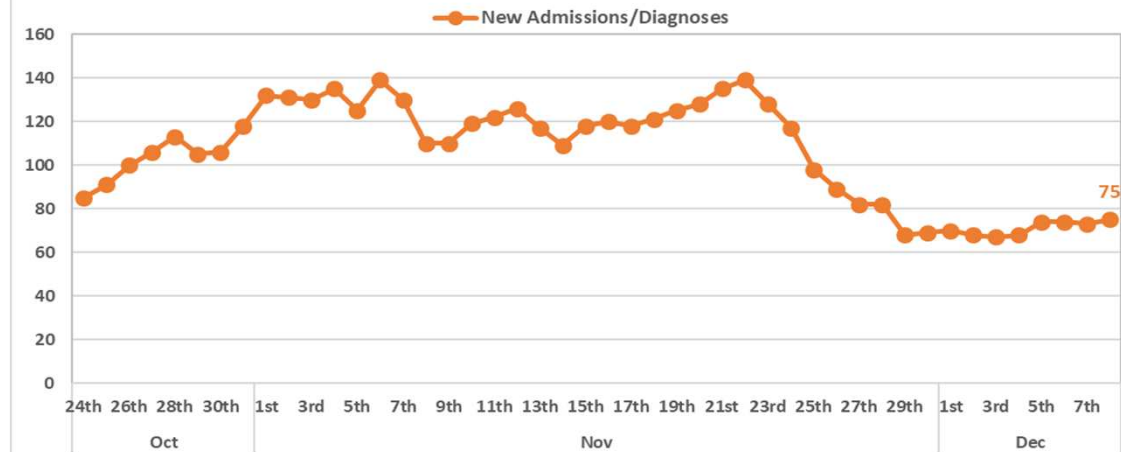
# South Tees Hospital Trust



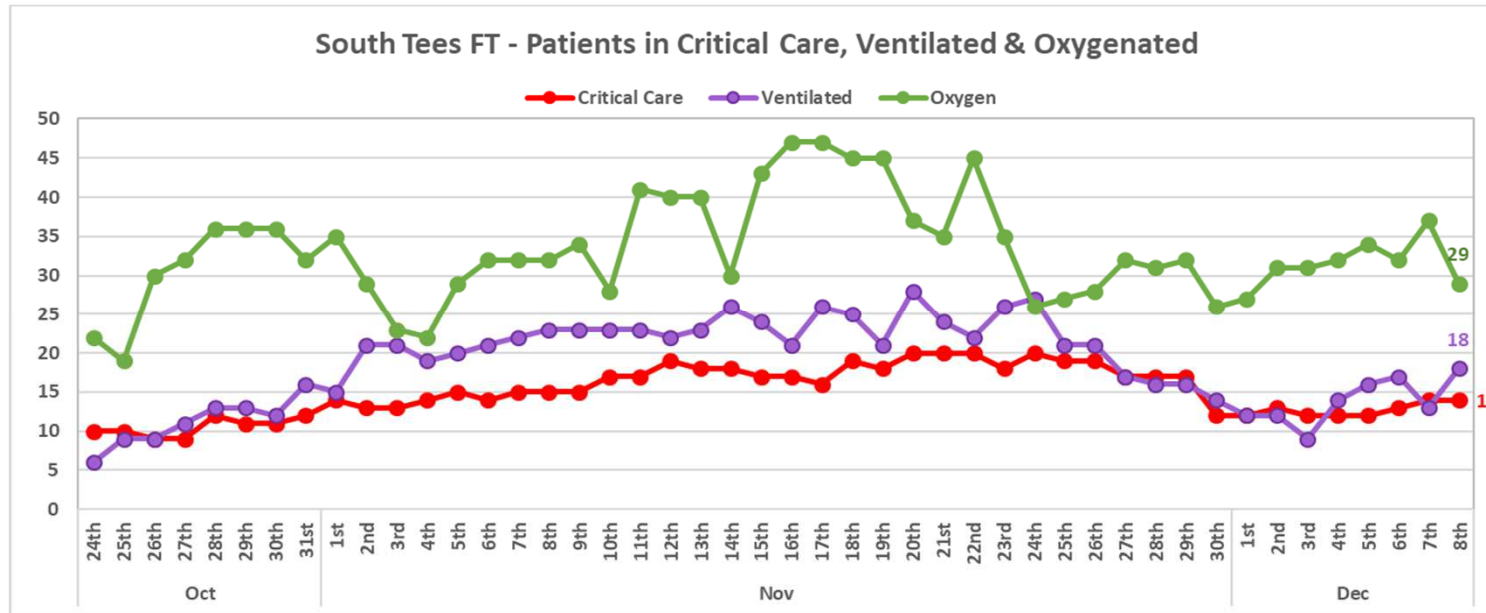
South Tees FT - COVID Inpatients



South Tees FT - COVID New Admissions/Diagnoses Last 7 Days



South Tees FT - Patients in Critical Care, Ventilated & Oxygenated



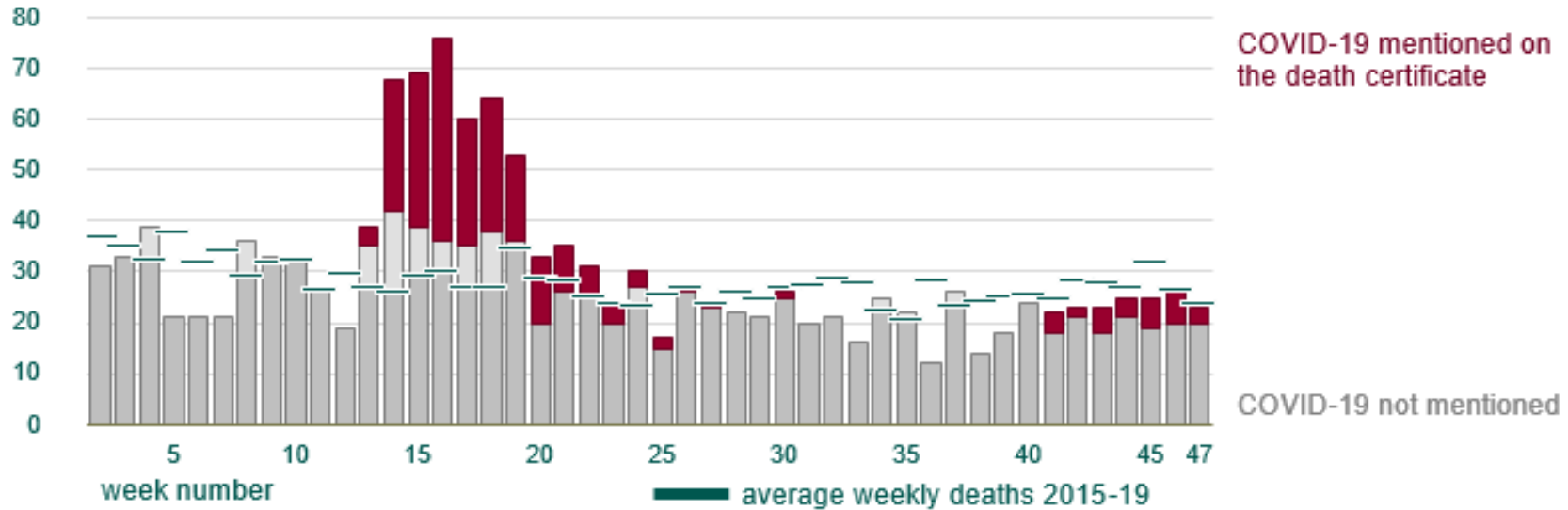
# COVID Deaths

Week ending 27<sup>th</sup> November 2020



COVID Deaths	Previous Week	Rate per 100k	England Rate	Hospital	Care Home	Home	Hospice
242	3	172	110	154	82	5	1

All deaths in 2020 by week, with proportion where COVID-19 is mentioned



2015-19 Average	2020 Total	Excess	Rate	England Rate
1,289	1,444	155	110	90