

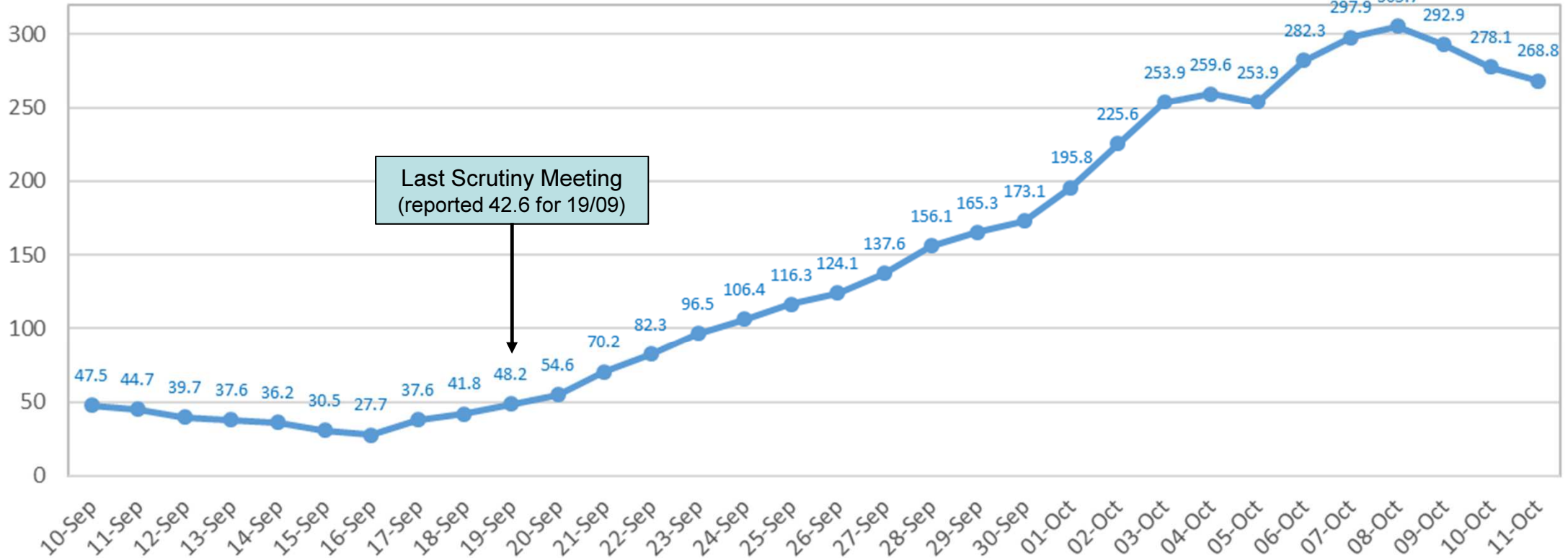
Middlesbrough Covid-19 Update 13 October 2020



Cases by Week

Rate of Middlesbrough Cases based on Specimen Test Date - Rolling 7 Day Average

Rate per 100,000



Last Scrutiny Meeting
(reported 42.6 for 19/09)



North East Region Summary

North East LA COVID Cases - Tested in Current 7 and Previous 7 Day Periods

North East LA	Current 7-Day Period (2nd - 8th Oct)		Previous 7-Day Period (25th Sep - 1st Oct)		% Change Rate
	Number	Rate	Number	Rate	
Newcastle upon Tyne	1,594	526	1,272	420	25.3%
Stockton-on-Tees	608	308	338	171	79.9%
Sunderland	844	304	708	255	19.2%
Middlesbrough	418	296	271	192	54.2%
County Durham	1,524	287	795	150	91.7%
North Tyneside	588	283	399	192	47.4%
Gateshead	539	267	398	197	35.4%
South Tyneside	401	266	381	252	5.2%
Hartlepool	240	256	203	217	18.2%
Redcar & Cleveland	286	209	164	120	74.4%
Darlington	206	193	174	163	18.4%
Northumberland	613	190	558	173	9.9%

Source - GOV.UK COVID Dashboard

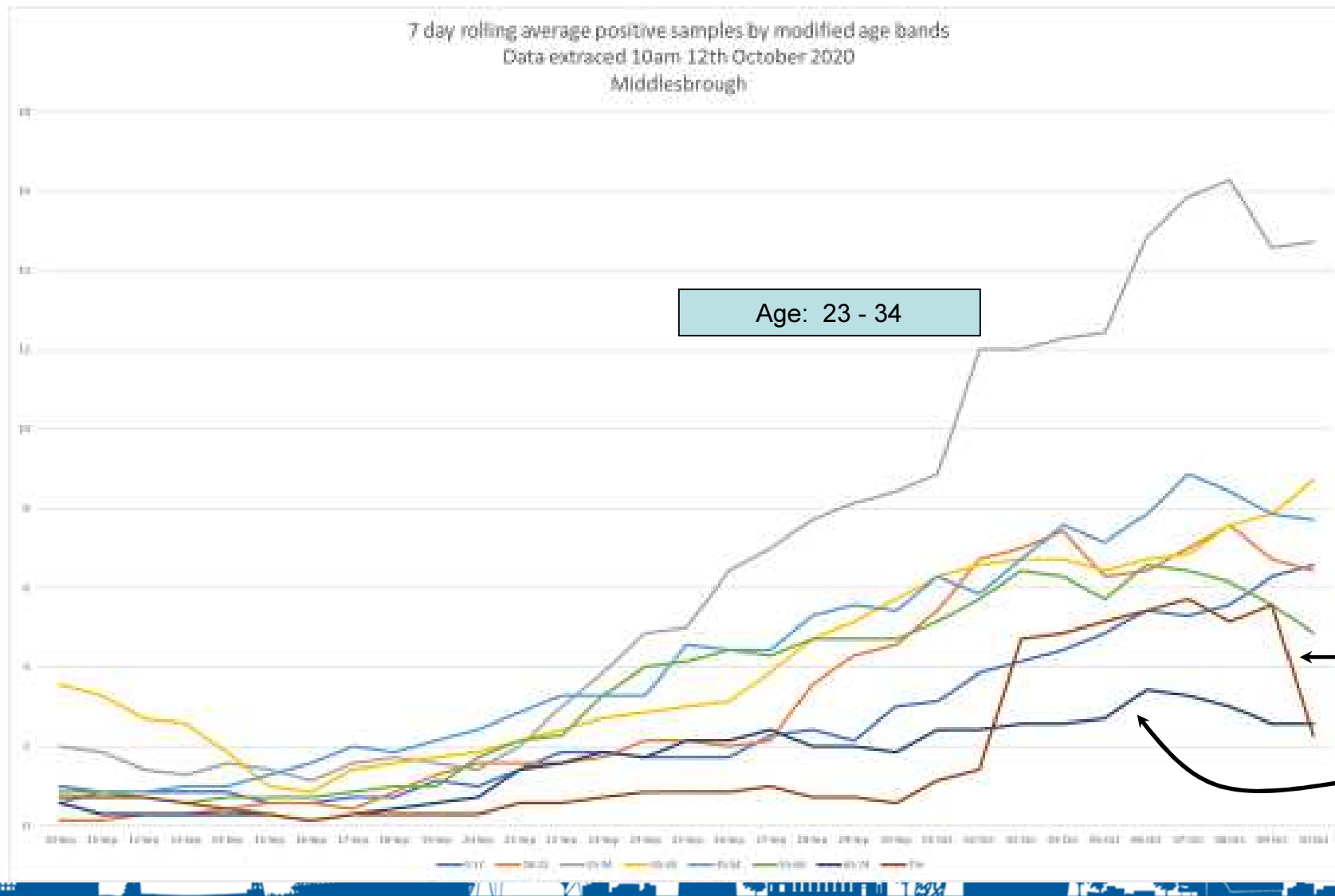
Pillar 2 Test Rates

Rate of Pillar 2 Tests (4th-10th Oct)	% Positive Pillar 2 Tests (4th-10th Oct)
3,308	23.1%
2,148	11.4%
2,165	10.4%
2,441	9.5%
2,263	15.1%
2,157	10.3%
2,027	9.1%
1,892	11.0%
2,313	9.6%
1,920	8.8%
1,939	7.5%
2,003	7.7%

Source - NHS Digital Testing Dashboard



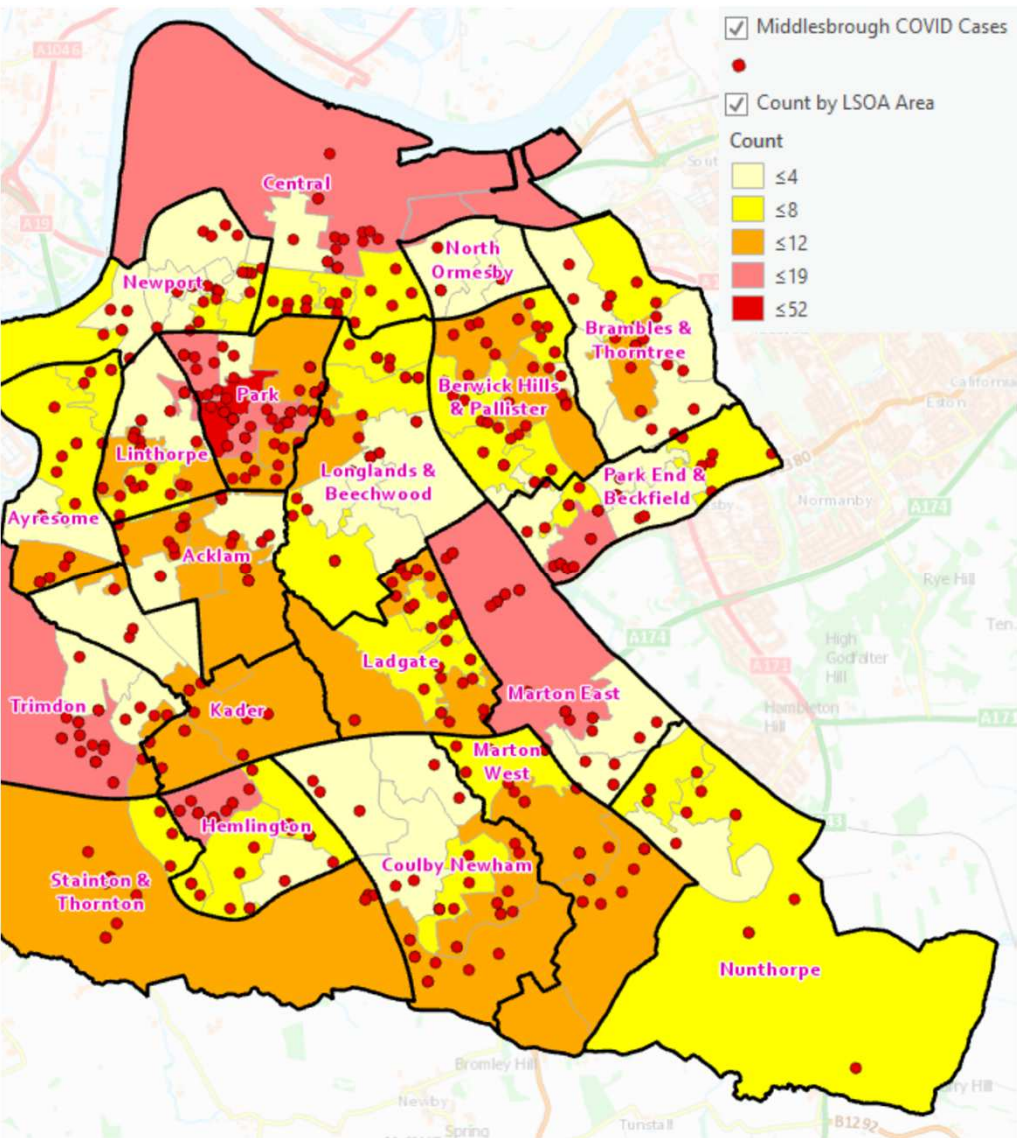
Analysis by Age Group (7 day rolling averages)



Age: 23 - 34

Age: 75+

Age: 65 - 74



COVID Cases Map – Previous 14 Day

Tested: 24 Sep – 07 Oct 2020.

Positive COVID cases in the previous 14 days (red) and the count by LSOA area (shading).

Total of 625 cases tested positive

Local COVID Alert Level: High

People must not socialise with anybody outside of their household or support bubble in any indoor setting whether at home or in a public place

People must not socialise in a group of more than 6 outside, including in a garden or other spaces like beaches or parks (other than where specific exemptions apply in law).

Businesses and venues can continue to operate, in a COVID-Secure manner, other than those which remain closed in law.

Certain businesses selling food or drink on their premises are required to close between 10pm and 5am. Businesses and venues selling food for consumption off the premises, can continue to do so after 10pm as long as this is through delivery service, click-and-collect or drive-thru.

Schools, universities and places of worship remain open

Weddings and funerals can go ahead with restrictions on the number of attendees

Exercise classes and organised sport can continue to take place outdoors. These will only be permitted indoors if it is possible for people to avoid mixing with people they do not live with (or share a support bubble with)

People can continue to travel to venues or amenities which are open, for work or to access education, but should look to reduce the number of journeys they make where possible

Asks” of Government

Exit strategy

Testing & Extended Tracing

Communications

Support for Care Homes

Education & Enforcement

Support for Vulnerable People (Help Boro Support)

Support for businesses

Increased uptake of Flu Vaccine

Support for Homelessness and Asylum Seekers

Local Council Tax Subsidy (LCTS) grants

Towns Fund and Future High Streets Fund