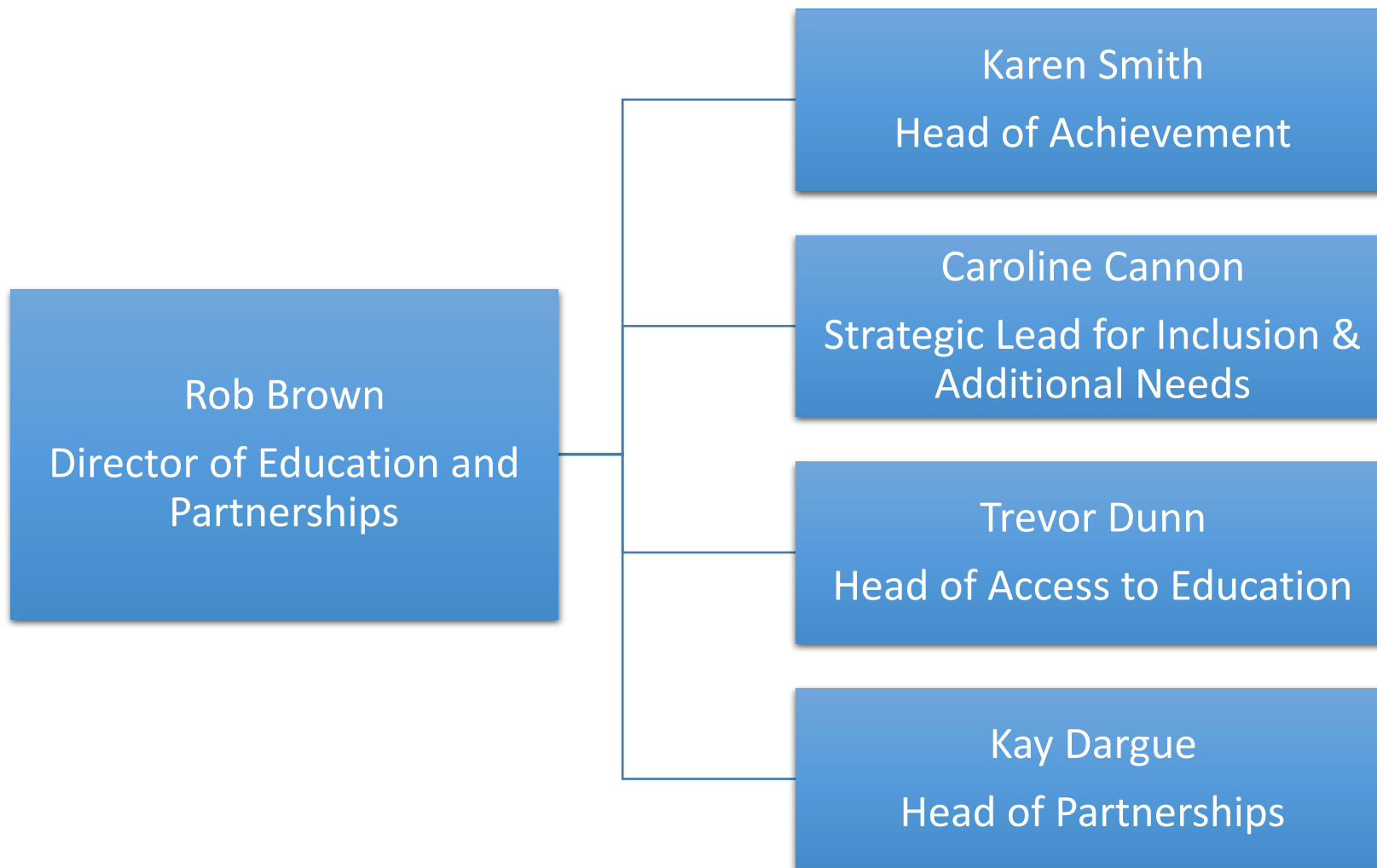


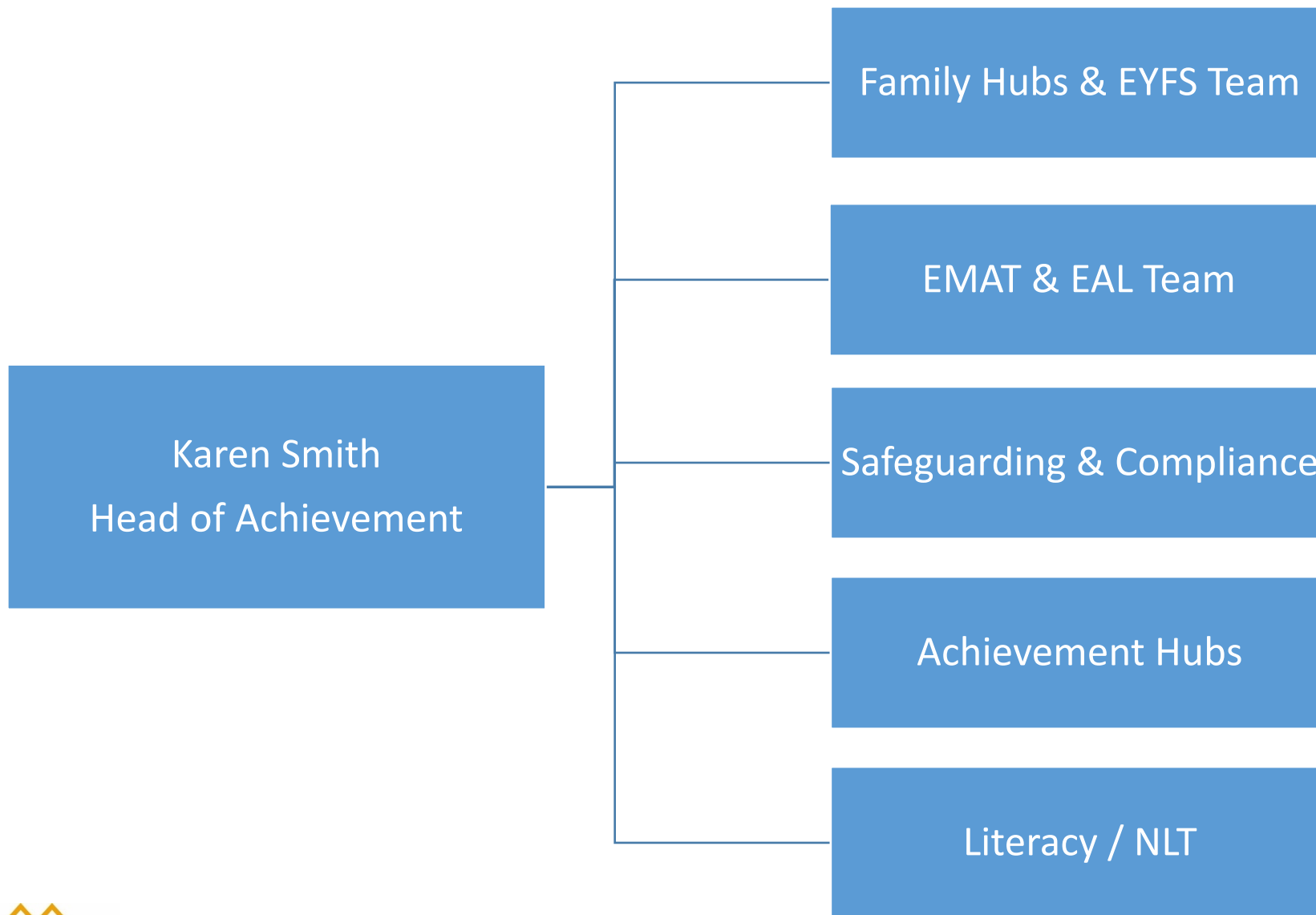
Children and Young People Scrutiny Panel

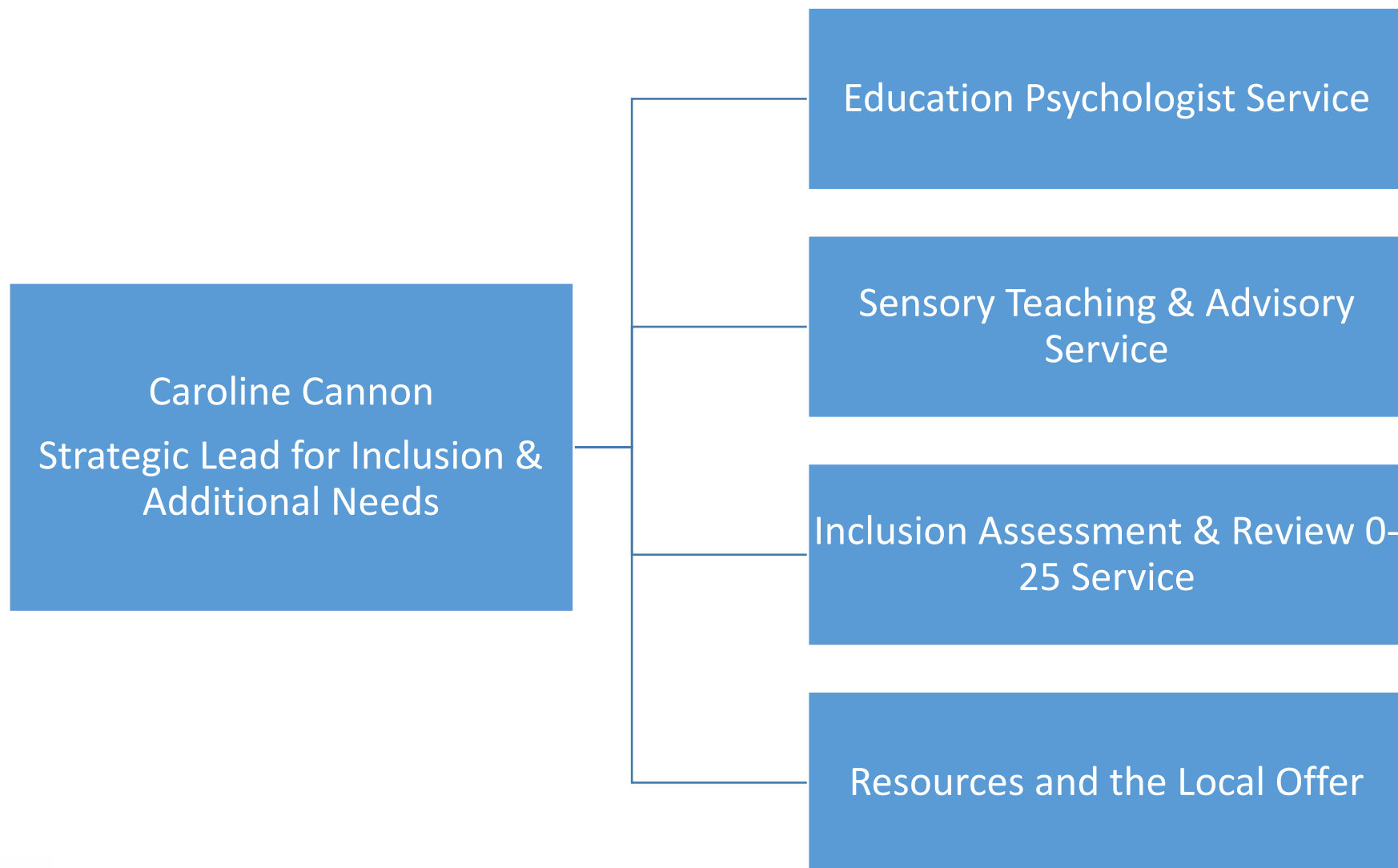
2023/24

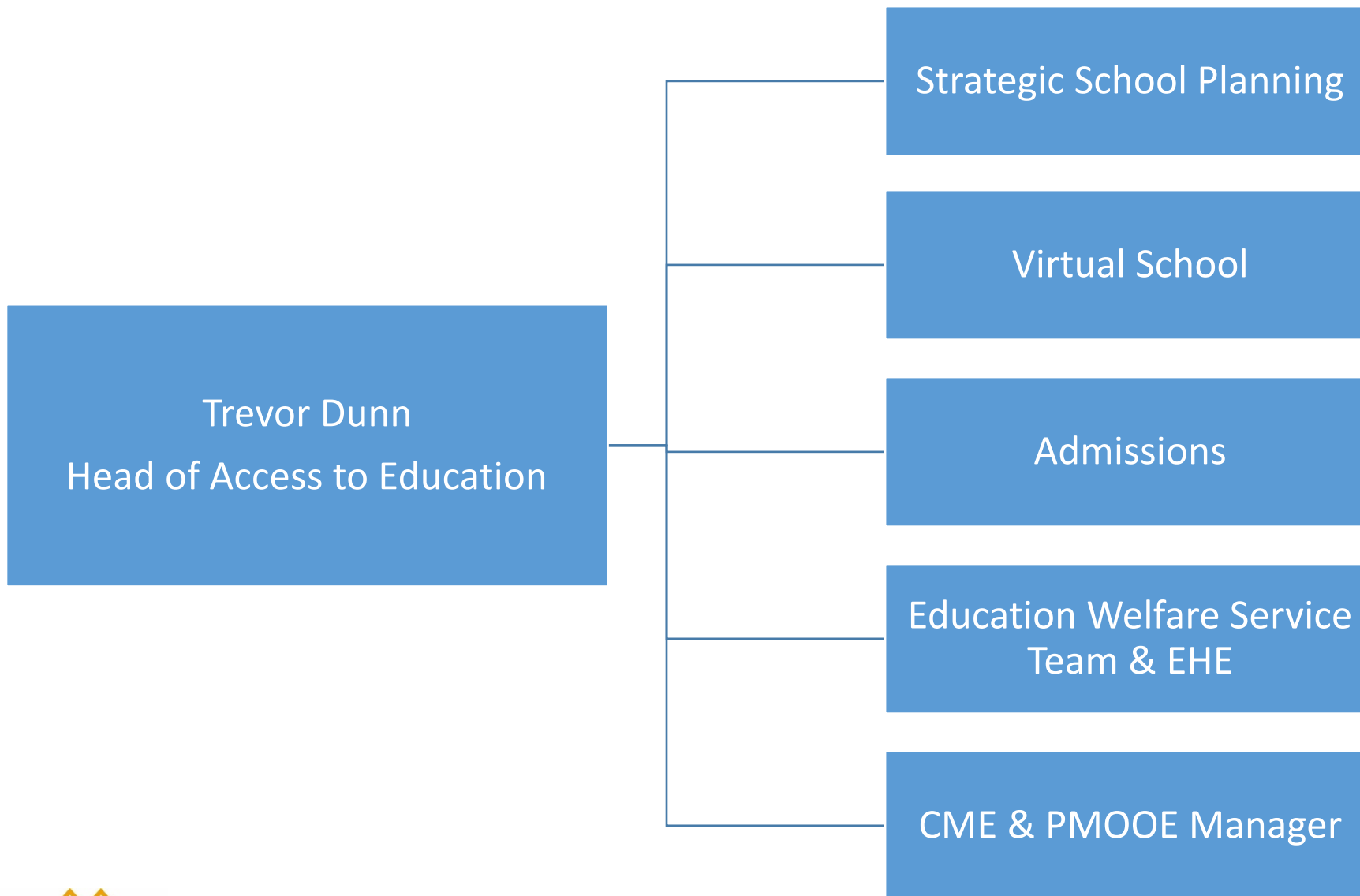


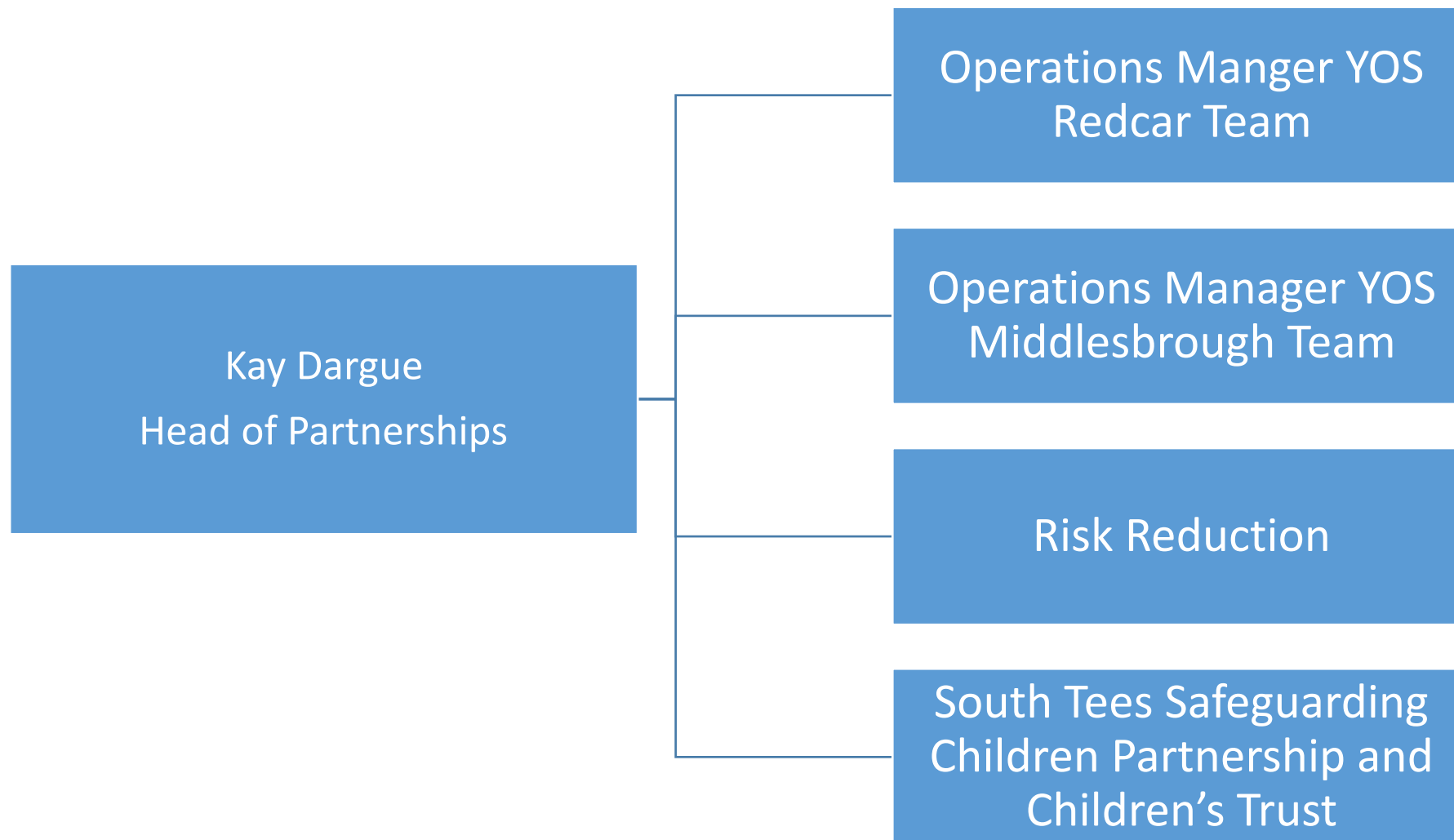
MIDDLESBROUGH
CHILDREN
MATTER











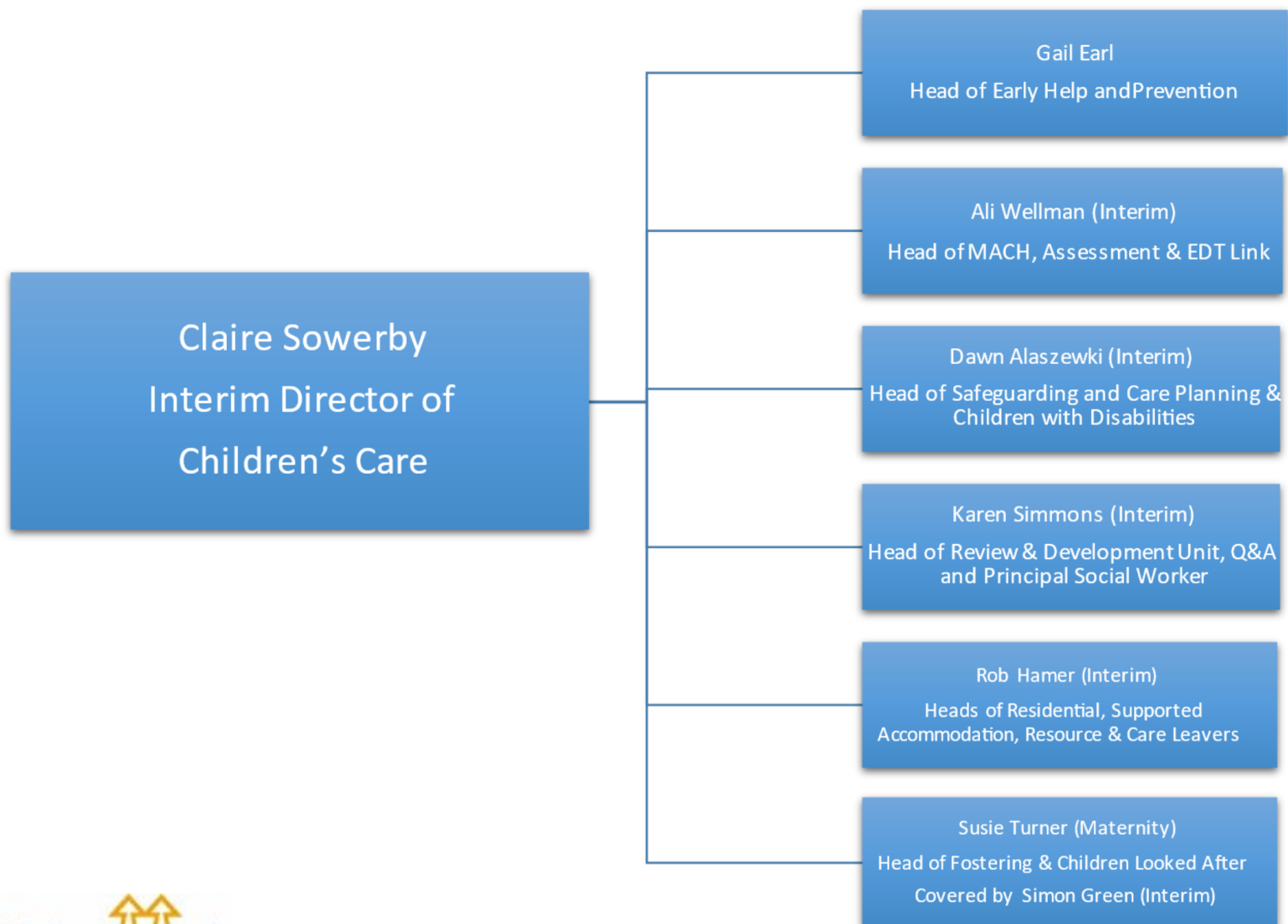
Priorities

Challenges

- Increasing Permanent Exclusions
- Increasing Education Health and Care Plans
- Falling school roll contrasted with increasing pressure in some parts of town
- Low School Readiness
- Low attendance

Innovation and Transformation

- Inclusion model
- SEND reform
- Place planning
- Family Hubs
- Attendance project/ White Paper
- Turnaround / Instant Justice



Children's Care and Early Help

Who we are...

- **Strategic Director Children's Services (Sue Myers)**
- Director of Children's Social Care, Early Help & Prevention (Claire Sowerby)
- Head of Service Early Help & Prevention (Gail Earl)
- Head of Service MACH, Assessment & Pre-Birth (Ali Wellman)
- Head of Service Safeguarding, Care Planning &
- Children with Disabilities (Dawn Alaszewski)
- Head of Service Children in Care (Susie Turner)
- Head of Service Residential and Resources (Rob Hamer)
- Head of Service Quality Assurance & RAD (Karen Simmons)

What we do...

- Provide a range of preventative interventions for children and their families from pre-birth to 19 years
- Support children & young people from 0-18 under Child In Need Plans, including our disabled children
- Safeguard children and young people 0-18, under statutory frameworks
- Offer and Edge of Care Service via a team of 24/7 Family Resource Workers
- A Multi-Agency Exploitation Hub to support young people and families impacted by Sexual and Criminal Exploitation
- Commission additional resources for the children and families we support, including therapeutic intervention
- Care for and act as Corporate Parents to our most vulnerable 'Looked After' children and young people.
- Support our Care Leavers through transition, to independence
- Work Collaboratively with Education, Health, Public Health Police, Adult Services, Housing & Voluntary Sector partners.

Children's Care and Early Help

Impact (external)...

- Improved outcomes for children, young people and families
- Preventative Intervention reduces need for statutory services.
- Safeguarding and support children, young people and care leavers up to the age of 25
- Apprenticeship & employment opportunities for the community

Impact (internal)...

- Sufficiency of placements & workforce
- Savings Assurances within 23/24 budget
- Collaboration with wider council directorates

Key Issues...

- Internal placement sufficiency
- Recruitment and retention of permanent workforce
- Continued recruitment and retention of in-house foster carers
- Providing services to children and families within the financial savings plan
- Continued focus on practice improvement (Post Ofsted full inspection) to include;
 - Development and implementation of a 'Neglect Strategy' to tackle issues associated with poverty & deprivation (Domestic Abuse, Substance & Alcohol Misuse, Mental Health, Neglect)
 - Improve our offer to Care Leavers
 - Embed Exploitation Hub
 - Multi-disciplinary & multi-agency Pre-Birth Team
- Further strengthen partnerships & collaborations

Priorities

Challenges

- Delivering services within limited budget
- Recruiting and retaining staff
- Fragile improvements that need embedding
- High levels of child poverty and neglect
- OFSTED returning in September to inspect progress made.

Innovation and Transformation

- Exploitation hub
- Expand children's homes
- Recruit and retain Foster carers
- Family Hubs
- Locality teams
- Expand the academy